



NATIONAL WATER AND SEWERAGE CORPORATION

**NWSC INFRASTRUCTURE SERVICE
DELIVERY (ISDP) AND WATER SUPPLY
STABILISATION (WSSP) PROGRAMME**

PLAN FOR THE FINANCIAL YEAR 2015/2016

2015

TABLE OF CONTENTS

2015

Managing Director's Statement

03

Chapter 1 (BACKGROUND)

09

Status of the NWSC Geographical Coverage as at 30th June 2015

Chapter 2 (ISDP, PSP AND WSSP IMPLEMENTATION DURING THE FY 2014/15)

13

- 2.1 Water Mains Extensions
- 2.2 Sewer Mains Extensions
- 2.3 Propoor Interventions
- 2.4 Financial/Expenditure Analysis

Chapter 3 (ISDP AND WSSP PERFORMANCE REVIEW FOR FY 2014/2015)

23

- 3.1 Water Mains Extended during the FY 2014/15

- 3.2 Sewer Mains Extended during the FY 2014/15
- 3.3 Public Stand Posts (PSPs) Implemented during the FY 2014/15
- 3.4 Status of Implementation of Water Supply Stabilization Programme (WSSP), FY 2014/15

Chapter 4 (PLAN FOR INFRASTRUCTURE SERVICE DELIVERY (ISDP) AND WATER SUPPLY STABILIZATION (WSSP) FOR FY 2015/16)

54

- 4.1 Planned Water Mains Extensions for FY 2015/2016
- 4.2 Planned Sewer Mains Extensions for FY 2015/2016
- 4.3 Planned Public Stand Posts (PSPs) for FY 2015/2016
- 4.4 Water Supply Stabilisation Plan (WSSP): Planned Interventions for FY 2015/2016

Chapter 5 (SUMMARY OF PLANNED WATER MAINS EXTENSIONS, SEWER MAINS EXTENSIONS AND PUBLIC STAND POSTS FOR FY 2015/2016)

130

- 5.1 Planned Water Mains Extensions for Kampala Metropolitan Area for FY 2015/16
- 5.2 Planned Water Mains Extensions for Central Region for FY 2015/16
- 5.3 Planned Water Mains Extensions for Northern and Eastern Region for FY 2015/16
- 5.4 Planned Water Mains Extensions for Western and South Western Region for FY 2015/16
- 5.5 Planned Water Mains Extensions for OTHER Towns to be taken over during the FY 2015/16
- 5.6 Planned Sewer Mains Extensions for FY 2015/16
- 5.7 Planned Public Stand Posts for Kampala Metropolitan Area for FY 2015/16
- 5.8 Planned Public Stand Posts in Central Region for FY 2015/16
- 5.9 Planned Public Stand Posts in Northern and Eastern Region for FY 2015/16
- 5.10 Planned Public Stand Posts in Western and South Western Region for FY 2015/16
- 5.11 Planned Public Stand Posts for OTHER Towns to be taken over during the FY 2015/16



NWSC is a Public Utility Company whose mandate as defined in the NWSC Act Section 5(1) is to operate and provide water and sewerage services in areas entrusted to it on a sound commercial and viable basis.

During the Financial Year 2013/14, the NWSC launched a **5 year Strategic Direction (2013-2018)** with the primary objective of ensuring that the Corporation meets the escalating growth in demand for services.

**“Unless we
ways and means
the challenge
right to**

Managing Director's Statement

This is in tandem with the increasing policy expectations of Government. Key among the Policy expectations is the need to attain water service coverage of 100% within the Urban Centers of Uganda. It is against this strategic objective that the Corporation

has taken a bold expansion drive of the geographical coverage from the traditional 23 towns to the current 110 towns as at 30th June 2015. Suffice it to say; during the financial year 2014/15, 44 towns were handed over by the Ministry of water

and Environment to the NWSC. The Transfer is in accordance with Urban Water Sector reform agenda of expanding the Corporation's mandate to cover all major urban centers within Uganda. This will ensure accelerated water and sewerage

can and do constantly seek and find to do a better job; unless we accept of the changing times; we have no survive and we shall not survive”.

service delivery within the urban areas.

The increase in urban centers and the growth within the existing towns comes along with challenges related to inadequacies in service delivery. But as Chester O. Fischer said, **“Unless we can and do constantly seek and find ways and means to do a better job; unless we accept the challenge of the changing times; we have no right to survive and we shall not survive”**. It is against this mindset that the Corporation is implementing the **Infrastructure Service Delivery Programme (ISDP)** and the

Water Supply Stabilization Programme (WSSP) in the various towns under NWSC’s jurisdiction to address water supply challenges.

The ISDP and WSSP were launched in January 2014 and aim at increasing water supply reliability and accessibility with the primary focus on water and sewer mains extensions. This is a form of subsidy to a customer given the fact that the customer connection costs are minimized as water mains get closer to customer premises

The first phase of ISDP entailed implementation of quick win mains extensions in all the NWSC areas of operation for a period of six months (January - June 2014). During this phase, over 470 kms of water mains were extended in the various NWSC towns. Subsequently, a second phase for the financial year 2014/15 was launched in July 2014 and this was shared with stakeholders through the print Media. The publication of ISDP and WSSP undertakings underscores NWSC’s commitment to stakeholder management and the importance NWSC is taking towards Vision with Action.

Under the second phase, 1,448 kms of water mains were extended in the various NWSC towns which accounts for 96% of the revised target of 1523 kms. The growth in geographical coverage from 66 to 110 towns during the review period made it imperative for the Corporation to revamp

Continuous Improvement for Sustainable and Equitable Service Delivery

and expand the existing network, enhance production capacity and ensure connectivity in the virgin areas. Hence the annual target for water mains extensions was revised upward by 67%, from the original plan of 908 kms to 1,523 kms.

Since the inception of the ISDP in 2014, over 1,918 kms of water mains have been extended. The extensions made under the ISDP account for 23% of the total water mains (8411kms).

In regard to sewer mains, 38 kms were extended during the FY 2014/15, and over 55kms have been extended since the inception of the ISDP.

Of significance to note is the fact that the Infrastructure **Service Delivery Programme** is wholly funded from the Corporation's internally generated resources which is a clear

manifestation of the performance improvements that have enabled the NWSC plough back its surplus into infrastructure. This has in turn increased water supply reliability and accessibility. Areas previously devoid of services now have piped water services, while a number of dry zones (no water areas) have now been converted to wet zones.

Under the **Water Supply Stabilisation programme (WSSP)**, a plethora of quick win investments such as; **installation of booster pumps, water reservoir tanks, borehole drilling, and installation of standby generators, among others** were under taken during the FY 2014/15. This has enhanced water supply capacity, stability and reliability especially in the new towns.

Premised on the equity principle, provision of at least the basic supply of water services

to all sections of the population is paramount. This is being pursued through installation of **Pro-Poor Connections** which have a differentiated special tariff targeting the less privileged section of our Customers, **“the Urban Poor”**. It should be noted that the price at the standpipes is much less than the other categories of consumers, with the price per 20 litre Jerrican going for only Shs 33. During the financial year 2014/15, **924 PSPs** were installed accounting for 94 % of the annual target (984 PSPs).

Going forward, as a result of the successes so far attained under the **ISDP**, the Corporation shall continue with implementation of the programme in financial year 2015/16. During the year, a total of **937.8 kms** of water mains and **26.7 kms** of sewer pipelines will be extended in the various areas (i.e. **Kampala Metropolitan area, Central, Northern and Eastern, and Western and**

“Being The Leading Water Utility in The World”.

South Western regions). Under the **poor interventions**, a total of **909 Public Stand Posts (PSPs)** will be installed targeting Urban Poor pocket in the various NWSC operational areas.

In line with the **Water Supply Stabilisation Programme (WSSP)**, due attention shall be given to the upside of production adequacy. Therefore, the Corporation shall continue carrying out water supply stabilization interventions aimed at ensuring that production is adequate to meet the increasing demand for services.

In conclusion I wish to commend all our esteemed customers for embracing NWSC programmes that are geared towards bettering service delivery. I also wish to commend the Ministry of Water and Environment and the Ministry of Finance, Planning and Economic Development for the continuous support as we pursue our Vision of **“Being The Leading Water Utility in The World”**.

The NWSC pledges and is committed to bringing about change in the livelihoods of the people of Uganda, and therefore contributing to the National Vision of a

transformed Ugandan Society from a Peasant to a modern and prosperous country through the proliferation of its services. We look forward to a continued fruitful and harmonious relationship.

Thank you

Dr. Eng. Silver Mugisha
MANAGING DIRECTOR

Continuous Improvement for Sustainable and Equitable Service Delivery

Vision

**TO BE THE LEADING CUSTOMER CENTRED
WATER UTILITY IN THE WORLD.**

Continuous Improvement for Sustainable and Equitable Service Delivery

Mission

**TO SUSTAINABLY AND EQUITABLY
PROVIDE COST EFFECTIVE, QUALITY
WATER AND SEWERAGE SERVICES TO
THE DELIGHT OF ALL STAKEHOLDERS,
WHILE CONSERVING THE
ENVIRONMENT**

Continuous Improvement for Sustainable and Equitable Service Delivery

CHAPTER ONE

BACKGROUND

1. Introduction.

The National Water and Sewerage Corporation (NWSC) is a Public Utility Company whose mandate as defined in the NWSC Act section 5(1), is to operate and provide water and sewerage services in areas entrusted to it on a sound, commercial and viable basis.

During the Financial Year 2013/14, the Corporation launched a **Five Year Strategic Direction (2013-2018)** that provides the Corporation's outlook and key strategic interventions for the next five years, building upon the Corporate Plan 2012-2015, and taking into account the wider stakeholder expectations, policy directions and competitive environment. One of the key focus areas under the Five Year Strategic Direction is to carry out network expansion

and intensification through implementation of both the **Infrastructure Service Delivery Programme (ISDP) and Water Supply Stabilization Program (WSSP)**. The primary focus of the two programmes is to ensure increased accessibility to piped water and sewerage services in all areas where the NWSC is currently operating. This is in line with the Urban water policy Direction of ensuring 100% water coverage in the medium term.

The first phase of the ISDP was launched in January 2014, and during this phase, 470.3km of water mains were extended within a period of six months (January-June 2014). During the FY 2014/15, 1,448 kms of water mains were extended. It should be noted that the total number of Kms of water mains extended since the inception of ISDP is 1, 916kms. This accounts for 23% of the entire network length (8,411km of water mains).

On the other hand, over 55kms of sewer mains have been extended under the ISDP programme since its inception, out of which 38 kms were laid during the review period



. It should further be noted that the current sewer network covers 16 towns (ie. Kampala, Jinja, Masaka, Entebbe, Iganga, Tororo, Soroti, Lira, Gulu, Mbale, Kisoro, Masindi, Hoima, Kabale, Fort Portal and Mbarara), with the rest of other towns using onsite sanitation facilities.

Alongside the ISDP programme, the Corporation launched the Water Stabilisation Programme (WSSP) whose main focus is to increase water supply reliability and reduce incidences of dry zones. Under this programme, the Corporation is undertaking a number of water stabilization interventions to ensure that areas initially devoid of water can have enough water supplies.

In addition to ISDP and WSSP, the Corporation under the auspices of the Ministry of Water and Environment is undertaking an expansion drive that aims at increasing the NWSC geographical coverage. The take-over process has culminated into increased number of towns under NWSC' jurisdiction, from 28 to 110 areas as at 30th June 2015(*see details in table 1 below*).

Table1: Status of the NWSC Geographical Coverage as at 30th June 2015

Old Towns (up to June 2013)				New Towns FY 2013/14				New Towns ,FY 2014/15			
1	Kampala	24	Hoima	1	Bombo	24	Kitagata	1	Rushere	24	Matany
2	Mukono	25	Mbarara	2	Nebbi	25	Kigumba	2	Kiruhura	25	Biharwe
3	Wakiso	26	Kabale	3	Kabwohe	26	Kiryandongo	3	Kazo	26	Kabereebere
4	Jinja	27	Bushenyi	4	Itendero	27	Bweyale	4	Sironko	27	Kalaki
5	Njeru	28	Ishaka	5	Kyangyenye	28	Kaliro	5	Budadiri	28	Atariri
6	Entebbe			6	Kisoro	29	Otuboi	6	Rubindi	29	Kapeeka
7	Kajjansi			7	Rukungiri	30	Kitgum	7	Bwizibera	30	Kagoma
8	Lugazi			8	Kebisoni	31	Pader	8	Bugiri	31	Ssemuto

Continuous Improvement for Sustainable and Equitable Service Delivery

Old Towns (up to June 2013)				New Towns FY 2013/14				New Towns ,FY 2014/15			
9	Mbale			9	Buyanja	32	Apac	9	Naluwerere	32	Bugonji
10	Iganga			10	Rwerere	33	Aduku	10	Buwuni	33	Ryeru
11	Soroti			11	Nyakagyeme	34	Kalisizo	11	Buwenge	34	Magambo
12	Tororo			12	Kanungu	35	Paidha	12	Kamuli	35	Kichwamba
13	Malaba			13	Kihihi	36	Mityana	13	Mbulamuti	36	Rubirizi
14	Masaka			14	Kambuga	37	Luwero	14	Zirobwe	37	Mpondwe
15	Kaberaido			15	Butogota	38	Wobulenzi	15	Kalungu	38	Adjuman
16	Amuria			16	Kanyampanga			16	Kyotera	39	Kiganda
17	Gulu			17	Kanyantoro			17	Sanje	40	Lukaya
18	Lira			18	Kateete			18	Kakuuto	41	Buwama/Kayabwe
19	Arua			19	Nyamirama			19	Mutukula	42	Wandi
20	Mubende			20	Mayuge			20	Ntungamo	43	Kakiri
21	Fort Portal			21	Ibanda			21	Ibuje	44	Nakaseke
22	Kasese			22	Lyantonde			22	Moroto		
23	Masindi			23	Kamwenge			23	Kangole		

The process of takeover of more towns shall continue till the end of the Five Year Strategic Direction period 2018 and the geographical coverage is envisaged to expand to over 120 service areas.

A background image showing a water splash with droplets and ripples, overlaid with a blue gradient.

ISDP AND WSSP PERFORMANCE REVIEW FOR FINANCIAL YEAR 2014/2015

Continuous Improvement for Sustainable and Equitable Service Delivery

CHAPTER TWO

ISDP, PSP AND WSSP IMPLEMENTATION DURING THE FY 2014/15

2.1 Water Mains Extensions

coverage increased from 66 towns to 110 towns.

The original target of water mains for FY2014/15 was 908.9 kms. During the year, the target was revised upwards by 67% to 1,523kms to meet the increased demand emanating from takeover of new towns. During the FY 2014/15, the NWSC geographical

Out of the total annual target , Western and South western Region accounted for 47% (705.5km), Central region for 22%(338km), Eastern and Northern region for 21%(313km) and Kampala water 11%(153km (*see table 1*)

Table 1: Planned Water Mains extensions for the period under review, FY 2014/15

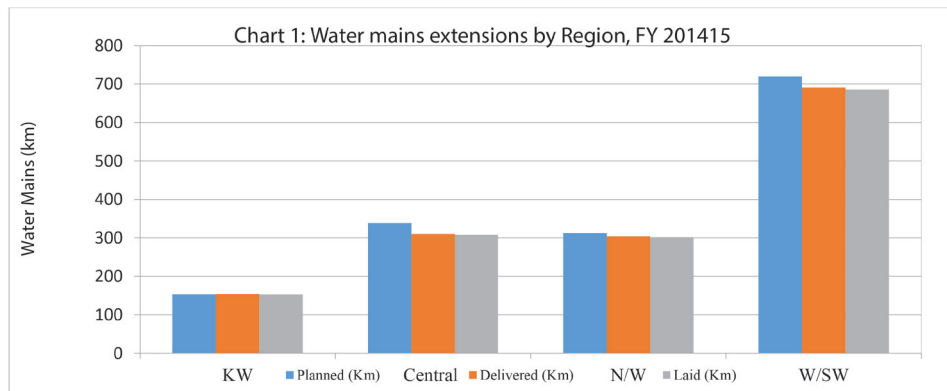
Region	Planned (km)	%
Kampala Metropolitan area	153.1	10%
Central	338.3	22%
Northern and Eastern	311.9	21%
Western and South Western	719.8	47%
Total	1,523.1	100%

During the FY 2014/15, 1,448 km of water mains were laid in the various NWSC areas of operation against a revised target of 1,523km, accounting for 95% of the target. The total number of kms of water mains laid since the inception of the ISDP programme is over 1,918 kms. The performance points towards NWSC's commitment of ensuring increased

accessibility to water in the NWSC operational areas. Table 2 shows regional performance during the financial year under review.

Table 2: Water Mains Extended per region during the FY 2014/15

#	Region	Planned (Km)	Delivered (Km)	Laid (Km)	% Delivered	% Laid
1	Kampala Metropolitan area	153.1	153.6	152.8	100.3%	99.8%
2	Central	338.3	309.6	307.6	92%	91%
3	Northern and Eastern	311.9	303.8	301.5	97%	97%
4	Western and South Western	719.8	690.9	685.6	96%	95%
	Total	1,523.1	1,457.9	1,447.5	96%	95%



with over 70 kms laid during the review period. The performance is attributed to implementation of Buloba water supply project that had a component for water mains extensions.

Western and South Western region registered the largest number of kms, with 685 kms laid during the review period. Within the region, the towns of Kisoro, Kitagata, Bushenyi, Fort Portal, Kasese, Kinoni, Mbarara, Kabale, Ntungamo, Rushere, and Kanungu registered the highest performance of over 100% (*see section 3.1.4*)

The highest performance was registered in Kampala metropolitan with 99.8% of the planned water mains laid in the various branches. The branches that registered the highest performance were Kyaliwajjala, Najjanankumbi, Nansana, Mukono and

City centre with each registering a performance of over 100%. The lowest performance was registered in Bunga and Gayaza, with less than 60% of the planned mains laid. Bulenga and Buloba branch registered the highest number of kms of water mains,

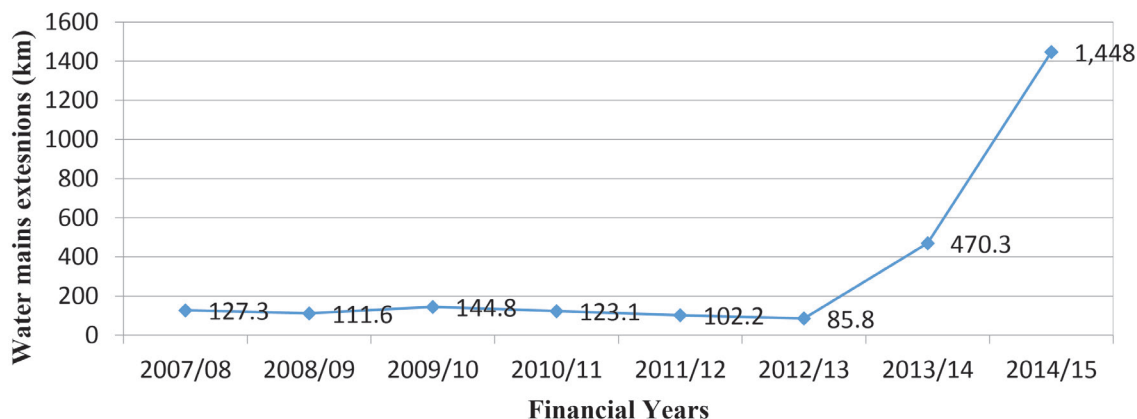
Trend Analysis of Water Mains Extensions

As a result of the ISDP implementation, the trend for water mains extensions has drastically shot up. Within a span of 18 months (January 2014-June 2015), over 1,918kms of new water mains have been extended in the various NWSC operational areas. The table and graph below show a trend in the water mains extension over the

period 2007-2015), which demonstrate the fact that the period 2013-2015 was the turning point of the growth in water mains extension, an indicator of the NWSC's commitment of ensuring water supply reliability in all operational towns.

Table3: Trend analysis of water mains extensions 2007-2015(p)

FY	2007/08	2008/09	2009/10	2010/11	2011/12	2012/13	2013/14	2014/15
Water mains (Km)	127.3	111.6	144.8	123.1	102.2	85.8	470.3	1,447.5



2.2 Sewer Mains Extensions

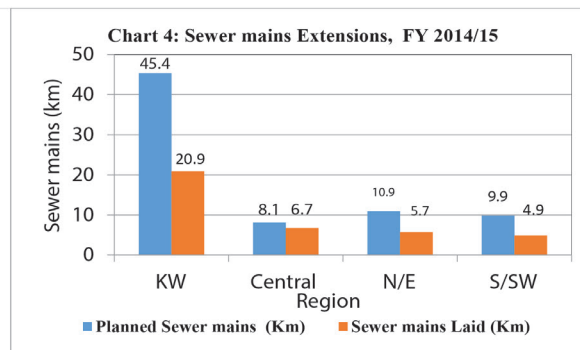
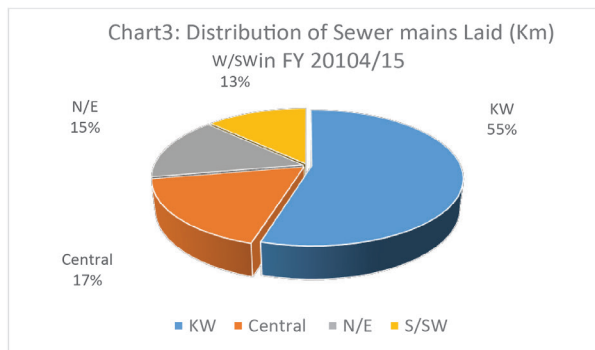
During the review period, 38.2 kms of sewer mains were laid against a target of 74.2 kms, a performance of 52%. The highest performance was registered in Central region, with 83% of the planned kms of

sewer mains laid, and Kampala Metropolitan region registered the lowest performance of 46% of the target. Notwithstanding the low performance, 55% (20.9kms) of the sewer mains laid during the financial year were in Kampala Metropolitan region given the high

demand. Out of the 20.9 kms, 12.5 kms were laid under Kampala Lake Victoria Protection Project 1, and 20.8 kms under Kampala Sanitation Programme (LVP2) (*See details in table 4 and section 3.2*).

Table4: Summary of Sewer Mains Extended during the FY 2014/15 by Region

#	Region	Planned (Km)	Delivered (Km)	Laid (Km)	% Delivered	% Laid
1	Kampala Metropolitan area	45.394	20.939	20.889	46%	46%
2	Central	8.100	7.300	6.710	90%	83%
3	Northern and Eastern	10.9	6.1	5.73	56%	53%
4	Western and South Western	9.855	6.155	4.895	62%	50%
	Total	74.249	40.494	38.224	55%	52%

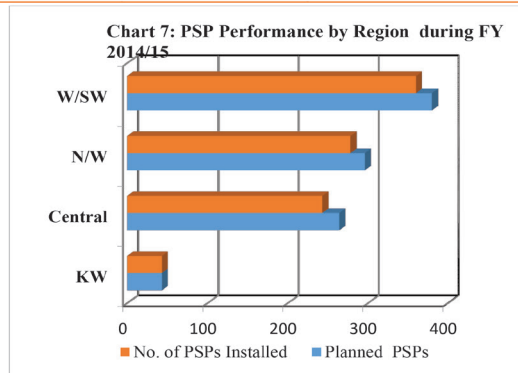
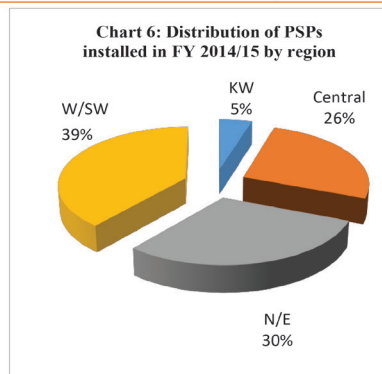


2.3 Propoor Interventions

During the FY 2014/15, 924 of Public Stand Posts (PSPs) were installed against a target of 983 PSPs, representing 94% of the annual target. 39% of the PSPs were installed in Western and South Western Region, and Kampala Metropolitan registered the lowest Number of PSPs (*see table 5, charts below and details in sect.3.3*)

Table 5: Summary of PSPs Implemented during the FY 2014/15 by Region

#	Region	Planned PSPs	No. of PSPs Installed	%ge Installed
1	Kampala Metropolitan	43	43	100%
2	Central	264	243	92%
3	Northern and Eastern	296	278	94%
4	Western and South Western	380	360	95%
Total		983	924	94%



2.4 Financial/Expenditure Analysis

Key among the focus areas under the Five Year Strategic Direction 2013-2018 is to ensure increased service coverage through implementation of ISDP (water and sewer mains extensions) and increased connectivity including propoor connections. In line with this goal, the Corporation has committed financial resources towards this line of

expenditure (“Minor Capex”) in addition to the ongoing Major capital projects.

During the period under review, at least Shs 31.8 billion was spent on the pipes that were laid in the various NWSC towns. The estimated total expenditure on minor capital expenditure was Shs 38.6 billion (this includes water and sewer pipes, PSPs and Connections. The estimated total

expenditure on ISDP since its inception is Shs 42.1 billion and at least Shs 53.9 billion has been spent on water and sewer pipes, PSPs and new water connections for the last two financial years.(2013/14 and 2014/15)

Table 6: Expenditure Analysis on Minor CAPEX for the period July2013-June 2015

	2013/14	2014/15	Total
Water Mains Extns(Km)	470.3	1,447.50	1,918
Sewer Mains extensions(Km)	16.8	38.224	55
New PSPs	164	924	1,088
New Connections	28,068	34,000	62,068
Exp on Water and Sewer Mains (Shs. Million)	10,243.1	31,813.1	42,056.3
Est. Expenditure on PSP (Shs. Million)	164.1	924.3	1,088.4
Est. Expenditure on New connections (Shs. Million)	4,855.8	5,882.0	10,737.8
Total Estimated Expenditure	15,262.9	38,619.3	53,882.3

Note:

- i. *Est. Cost per PSP (shs)* 1,000,261
- ii. *Est. Subsidy for new connection (shs)* 173,000
- iii. *Cost pipes excludes labour and fittings*

Continuous Improvement for Sustainable and Equitable Service Delivery

The cost of labour and fittings during the financial year 2014/15 is estimated at 8.788 billion. Hence the estimated total cost on minor capital expenditure (mains extensions, PSPs, and new connections) during the review period is 47.4 billion. In addition, substantial amount has been spent on water supply stabilization (WSSP) programme to ensure areas originally devoid of water have access to reliable water supply.





INFRASTRUCTURE SERVICE DELIVERY PROGRAM AND WATER SUPPLY STABILISATION PROGRAMME

PERFORMANCE REVIEW FOR FINANCIAL YEAR 2014/15

Continuous Improvement for Sustainable and Equitable Service Delivery

CHAPTER THREE

ISDP AND WSSP PERFORMANCE REVIEW FOR FY 2014/2015

3.1 Water Mains Extended during the FY 2014/15

3.1.1 Kampala metropolitan area: Water Mains Extended during the FY 2014/15

#	Branch	Revised Plan (Km)	Delivered (Km)	Laid (Km)	% Delivered	% Laid
1	Bwaise	5.2	5.2	4.7	100%	90%
2	Bunga	2.1	1.1	0.9	52%	43%
3	City centre	1.5	1.7	1.7	113%	113%
4	Kansanga	1.77	1.77	1.77	100%	100%
5	Kireka	9.7	9.6	9.6	99%	99%
6	Ntinda	7.5	6.4	6.4	85%	85%
7	Kitintale/ Luzira	2	2	2	100%	100%
8	Mukono	10.6	12.6	12.6	119%	119%
9	Kanyanya	1.2	1.2	1.2	100%	100%
10	Matugga	6.7	6.7	6.7	100%	100%

#	Branch	Revised Plan (Km)	Delivered (Km)	Laid (Km)	% Delivered	% Laid
11	Kyaliwajjala	4	6.7	6.6	168%	165%
12	Salaama	1.3	1.3	1.3	100%	100%
13	Kyengera	3	3	3	100%	100%
14	Nansana	4.3	5.9	5.9	137%	137%
15	Nakulabye	2.5	1.5	1.5	60%	60%
16	Najjanankumbi	2	3.3	3.3	165%	165%
17	Gayaza	4.67	1.6	1.6	34%	34%
18	Wakiso	5.3	5.3	5.3	100%	100%
19	Natete	6.7	6.7	6.7	100%	100%
20	Ndejje	1	0	0	0%	0%
21	Bulenga& Buloba	70	70	70	100%	100%
	Sub-total	153.04	153.57	152.77	100.3%	99.8%

3.1.2 Central Region: Water Mains Extended during the FY 2014/15

#	Area	Planned (km)	Delivered (Km)	Laid (Km)	% delivered	% laid
1	Jinja	57.1	57.1	56.3	100%	99%
2	Lugazi	10.0	10.0	10.0	100%	100%
3	Mubende	34.0	32.4	32.4	95%	95%
4	Masaka	52.1	52.1	52.1	100%	100%
5	Kalisizo	10.0	10.0	10.0	100%	100%
6	Mityana	16.2	16.2	16.2	100%	100%
7	Entebbe	17.1	17.1	17.1	100%	100%
8	Iganga/Kaliro	20.8	20.8	20.3	100%	98%
9	Luwero	10.0	10.0	10.0	100%	100%
10	Wobulenzi	10.0	10.0	10.0	100%	100%
11	Bombo	10.0	10.0	10.0	100%	100%
13	Bweyale	31.6	28.6	28.6	91%	91%
14	Kigumba	21.2	20.5	20.5	97%	97%
15	Kamuli	5.0	3.0	3.0	60%	60%
16	Buwenge	5.8	4.0	4.0	69%	69%
17	Kalungu	6.0	0.0	0.0	-	-
18	Zirobwe	5.0	0.0	0.0	-	-

Continuous Improvement for Sustainable and Equitable Service Delivery

#	Area	Planned (km)	Delivered (Km)	Laid (Km)	% delivered	% laid
19	Kyotera	5.4	5.1	5.1	94%	94%
20	Mayuge	5.5	0.0	0.0	-	-
21	Bugiri	5.5	2.7	2.0	49%	36%
Sub Total		338.30	309.60	307.60	92%	91%

3.1.3 Northern and Eastern Region: Water Mains Extended during the FY 2014/15

#	Area	Planned (Km)	Delivered (Km)	Laid (Km)	% Delivered	% Laid
1	Tororo	81.1	81.1	81.1	100%	100%
2	Soroti	24.9	24.9	24.9	100%	100%
3	Lira	33.8	33.8	33.8	100%	100%
4	Pader	17.0	17.0	17.0	100%	100%
5	Nebbi.	20.0	19.8	18.5	99%	93%
6	Apac/Aduku	20.0	20.0	20.0	100%	100%
7	Gulu	15.5	15.1	15.1	97%	97%
8	Mbale/Budadiri	26.3	27.9	27.9	106%	106%
9	Sironko	5.0	2.2	2.2	44%	44%
10	Paidha	16.0	13.0	12.0	81%	75%
11	Arua	42.4	39.0	39.0	92%	92%

Continuous Improvement for Sustainable and Equitable Service Delivery

#	Area	Planned (Km)	Delivered (Km)	Laid (Km)	% Delivered	% Laid
12	Kitgum	10.0	10.0	10.0	100%	100%
Total		311.9	303.8	301.5	97%	97%

3.1.4 Western and South Western Region: Water Mains Extended during the FY 2014/15

#	Area	Planned (Km)	Delivered (Km)	Laid (Km)	% Delivered	% Laid
1	Kisoro	13.0	13.0	13.0	110%	110%
2	Masindi	16.4	15.4	14.5	94%	88%
3	Hoima	10.8	10.8	10.8	100%	100%
4	Kabale	36.1	36.1	36.1	100%	100%
5	Kitagata	32.0	35.0	35.0	109%	109%
6	Kabwohe	39.5	38.3	38.3	97%	97%
7	Bushenyi	14.8	16.5	16.5	111%	111%
8	Kamwenge	27.0	25.0	25.0	93%	93%
9	Rukungiri	71.0	63.0	61.0	89%	86%
10	Ibanda	37.5	35.1	35.1	94%	94%
11	Fort portal	26.0	26.0	26.0	100%	100%
12	Kasese	35.1	35.1	35.1	100%	100%

Continuous Improvement for Sustainable and Equitable Service Delivery

#	Area	Planned (Km)	Delivered (Km)	Laid (Km)	% Delivered	% Laid
13	Mbarara	158.0	163.0	161.8	103%	102%
14	Rushere	54.5	54.5	54.5	100%	100%
15	Rubindi	5.0	4.0	4.0	80%	80%
16	Kinoni	5.2	6.2	6.2	119%	119%
17	Nyihanga	7.0	0	0	0%	0%
18	Kanungu	48.4	48.4	48.4	100%	100%
19	Lyantonde	46.0	45.0	44.0	98%	96%
20	Ntungamo	12.0	12.0	12.0	100%	100%
21	Bugongi	24.5	8.5	8.3	35%	34%
Sub Total		719.8	690.9	685.6	96%	95%

3.1.5 Summary of Water Mains Extended during the FY 2014/15 by Region

	Region	Planned (Km)	Delivered (Km)	Laid (Km)	% Delivered	% Laid
1	Kampala Metropolitan area	153.1	153.6	152.8	100.3%	99.8%
2	Central	338.3	309.6	307.6	92%	91%
3	Northern and Eastern	311.9	303.8	301.5	97%	97%
4	Western and South Western	719.8	690.9	685.6	96%	95%
	Total	1,523.1	1,457.9	1,447.5	96%	95%

Continuous Improvement for Sustainable and Equitable Service Delivery

3.2 Sewer Mains Extended during the FY 2014/15

3.2.1 Kampala Metropolitan Area: Sewer mains extended during the FY 2014/15

#	Area	Plan (Km)	Delivered (Km)	Laid (Km)	% Delivered	% Laid
1	Namuwongo and	1.056	1.006	1.006	95%	95%
2	Makerere Kikoni	3.1	0	0	0%	0%
3	Apollo Kaggwa Road	0.34	0.32	0.32	94%	94%
4	Kiira Road	0.38	0.325	0.325	86%	86%
5	Naguru-Katale-phase1	0.178	0.178	0.178	100%	100%
6	Naguru-Katale- Phase2	0.34	0.34	0.34	100%	100%
7	Naguru-Summit View	0.58	0.44	0.44	76%	76%
8	Nakulabye-Kiyindi	0.44	0.44	0.44	100%	100%
9	To Ntinda	1.13	0.54	0.49	48%	43%
10	Kibuli -Wabigalo	0.5	0	0	0%	0%
11	To Kabalagala TC	0.425	0.425	0.425	100%	100%
Subtotal		8.469	4.014	3.964	47%	47%
Kampala Water under LVP-1						
12	Line to Makindye/Katwe	1.8	1.8	1.8	100%	100%
13	Katanga/Makerere/Lubigi	9.925	9.925	9.925	100%	100%
14	Bugolobi R4	0.8	0.8	0.8	100%	100%

Continuous Improvement for Sustainable and Equitable Service Delivery

#	Area	Plan (Km)	Delivered (Km)	Laid (Km)	% Delivered	% Laid
Subtotal		12.525	12.525	12.525	100%	100%
Kampala Sanitation Program LVP 2						
15	Kinawataka sewers	12.6	2.8	2.8	22%	22%
16	Nakivubo sewers	11.8	1.6	1.6	14%	14%
Sub total		24.4	4.4	4.4	18%	18%
Total Kampala Metropolitan		45.40	20.94	20.89	46%	46%

3.2.2 Central Region: Sewer mains extended during the FY 2014/15

No.	Area	Planned (Km)	Delivered (Km)	Laid (Km)	% Delivered	% Pipes Laid
1	Jinja	2.000	2.000	1.710	100%	86%
2	Masaka	2.800	2.000	2.000	71%	71%
3	Entebbe	2.300	2.300	2.300	100%	100%
4	Iganga	1.000	1.000	0.700	100%	70%
Sub Total		8.100	7.300	6.710	90%	83%

3.2.2 Central Region: Sewer mains extended during the FY 2014/15

No.	Area	Planned (Km)	Delivered (Km)	Laid (Km)	% Delivered	% Pipes Laid
1	Jinja	2.000	2.000	1.710	100%	86%
2	Masaka	2.800	2.000	2.000	71%	71%
3	Entebbe	2.300	2.300	2.300	100%	100%
4	Iganga	1.000	1.000	0.700	100%	70%
Sub Total		8.100	7.300	6.710	90%	83%

3.2.3 Northern and Eastern Region: Sewer mains extended during the FY 2014/15

No.	Area	Planned (Km)	Delivered (Km)	Laid (Km)	% Delivered	% Pipes Laid
1	Tororo	3.400	3.400	3.400	100%	100%
2	Soroti	1.000	0	0	0	0
3	Lira	2.300	0.300	0.300	13%	13%
4	Gulu	2.800	1.000	0.630	36 %	23%
5	Mbale	1.400	1.400	1.400	100%	100%
TOTAL		10.9	6.1	5.73	56%	53%

3.2.4 Western and South Western Region: Sewer mains extended during the FY 2014/15

No.	Area	Pipe Length Planned (Km)	Pipe Length Delivered (Km)	Pipe Length Laid (Km)	% Delivered	% Pipes Laid
1	Kisoro	1.500	1.000	0.500	67%	33%
2	Masindi	1.000	0.300	0.200	30%	20%
3	Hoima	1.200	1.200	0.600	100%	50%
4	Kabale	1.000	1.000	0.940	100%	94%
5	Fort Portal	2.500	0	0	0%	0%
6	Mbarara	2.655	2.655	2.655	100%	100%
Sub Total		9.855	6.155	4.895	62%	50%

3.2.5 Summary of Sewer Mains Extended during the FY 2014/15 by Region

#	Region	Planned (Km)	Delivered (Km)	Laid (Km)	% Delivered	% Laid
1	Kampala Metropolitan area	45.394	20.939	20.889	46%	46%
2	Central	8.100	7.300	6.710	90%	83%
3	Northern and Eastern	10.9	6.1	5.73	56%	53%
4	Western and South Western	9.855	6.155	4.895	62%	50%
Total		74.249	40.494	38.224	55%	52%

Continuous Improvement for Sustainable and Equitable Service Delivery

3.3: Public Stand Posts (PSPs) Implemented during the FY 2014/15

3.3.1 Kampala Metropolitan Area: Public Stand Posts (PSPs) Implemented during the FY 2014/15

No.	Area	Planned	Installed	% Installed
1	Kampala Metropolitan	43	43	100%
Total		43	43	100%

No.	Area	Planned	Installed	% Installed
1	Jinja	60	47	78%
2	Lugazi	10	10	100%
3	Mubende	17	17	100%
4	Masaka	15	15	100%
5	Mityana	20	20	100%

No.	Area	Planned	Installed	% Installed
6	Entebbe	12	12	100%
7	Iganga	30	30	100%
8	Luwero	10	10	100%
9	Wobulenzi	10	10	100%
10	Bombo	10	10	100%
9	Bweyale	30	27	90%
10	Kigumba	30	25	83%
11	Kalisizo	10	10	100%
TOTAL		264	243	92%

3.3.3 Northern and Eastern Region: PSPs Implemented during the FY 2014/15

	Area	Planned PSPs	No. of PSPs Installed	% Installed
1	Tororo	36	36	100%
2	Soroti	20	19	95%

Continuous Improvement for Sustainable and Equitable Service Delivery

	Area	Planned PSPs	No. of PSPs Installed	% Installed
3	Lira	60	53	88%
4	Pader	10	10	100%
5	Nebbi	20	10	50%
6	Apac/Aduku	15	15	100%
7	Paidha	20	20	100%
8	Arua	20	20	100%
9	Kitgum	25	25	100%
10	Mbale	60	60	100%
11	Gulu	10	10	100%
	TOTAL	296	278	94%

3.3.4 Western and South Western Region: PSPs Implemented during the FY 2014/15

#	Area	Planned PSPs	No. of PSPs Installed	%ge Installed
1	Kisoro	10	10	100%
2	Masindi	20	20	100%

Continuous Improvement for Sustainable and Equitable Service Delivery

#	Area	Planned PSPs	No. of PSPs Installed	%ge Installed
3	Hoima	35	35	100%
4	Kabale	10	16	160%
5	Bushenyi	10	10	100%
6	Kitagata	10	11	110%
7	Kabwohe	10	11	110%
8	Kamwenge	30	30	100%
9	Rukungiri	43	51	119%
10	Ibanda	30	20	67%
11	Lyantonde	40	40	100%
12	Fortportal	40	50	125%
13	Kasese	20	13	65%
14	Mbarara	60	30	50%
15	Kanungu	12	13	108%
16	Rushere	0	0	0%
Sub Total		380	360	95%

Continuous Improvement for Sustainable and Equitable Service Delivery

#	Region	Planned PSPs	No. of PSPs Installed	%ge Installed
1	Kampala Metropolitan	43	43	100%
2	Central	264	243	92%
3	Northern and Eastern	296	278	94%
4	Western and South Western	380	360	95%
Total		983	924	94%

3.4 Status of Implementation of Water Supply Stabilization Programme (WSSP), FY 2014/15

3.4.1 Kampala Metropolitan Area: WSSP interventions Implemented during the FY 2014/15

#	Location	Interventions	Status June 2015
1	Wankulukuku booster	Constructed a water booster station at Wankulukuku.	Pumps water up Mutundwe hill.
2	Ndejje booster	Constructed a water booster station at Ndejje.	Pumps water up Ndejje hill and Zanta.
3	Wakiso	Drilling of two boreholes and Construction of the booster pump houses at Kyoga and Kikokiro	Kyoga full functioning and Kirokoro waiting for pump installation.
4	Sonde	Drilling of one borehole and Construction of the booster pump house at Kabanda's Farm	Completed
5	Gayaza	Drilling of one borehole and Construction of the booster pump house at Kabanyolo	Completed

#	Location	Interventions	Status June 2015
6	Kyambogo	Construction of 100 m ³ Steel Tank at kabaka's palace	Completed
7	Makindye	Rehabilitation of the 100m ³ of steel tank at Makindye hill	Completed, solving and the water stressed areas of Kuzungu, Makindye, Salama

3.4.2 Central Region: WSSP interventions Implemented during the FY 2014/15

No	Area	Planned Interventions - FY 2014/15	Status June 2015
1	Jinja	Construction of reservoir tank at Nanso (197m ³)	Procurement of Land in progress. Contractor for Reservoir Construction already procured.
		Construction of reservoir tank at Wanyange (200m ³)	Construction of the tank was completed
		Install booster pumps for Njeru, Bugembe and Naminya	The pumps were delivered to the area and have been installed
		Procure generators for Njeru, Bugembe and Naminya Boosters	Procurement initiated and progressing.
		Construct gabion walls at the lake shores in Masese WTP	Works in progress and to be completed by 31/07/2015
		Installation of Pressure Reducing Valves	The sections of the network prone to bursts due to high pressure are being replaced with higher pressure rated pipes, thus no need for Pressure Reducing Valves

No	Area	Planned Interventions - FY 2014/15	Status June 2015
2	Lugazi	Drilling of 02 No. New boreholes	Drilling of the two boreholes was completed.
		Procurement of 01 No. High Lift Pump to Replace the Old inefficient Pumps	Pump has already been delivered to the area and currently Installation of the pump is ongoing
3	Mubende	Install a 50m3 Reservoir at Kibyai	Procurement for construction of reservoir was initiated and quotations are being sourced
		Install a 50m3 Reservoir at Kasenyi	Tank Plates have been acquired. Works contract to be tendered by 31/07/2015
		Install 02 No. High Lift Pumps at Katoma Water works	The pumps were delivered to the area and installed, commissioned
		Install 01 No. Raw Water Pump at Katoma water works	The pumps were delivered to the area and installed, commissioned
		Deepen Boreholes 3, 2 & 1	. Works commenced and to be completed in the FY 2015/16
		Disilting Kacwamango and Katoma Raw Water Dams	De-silting of Dam completed. Chemical consumption has substantially reduced.
		Siting of 03 No. New Boreholes	Siting of 3 potential sites was done and a report from the consultant has been received. Deferred after Desilting Kacwamango Dam that increased raw water abstracted.

NWSC ISDP and WSSP: Plan for Financial Year 2015/2016

No	Area	Planned Interventions - FY 2014/15	Status June 2015
4	Masaka	Replace Air Release Valves on Kacwamango and Katabalanga	4 Air Release Valves have been acquired and all the 4 air release valves have been installed.
		Procurement of stand by generator for prison sewer booster.	The generator was delivered and installed
		Install 01 No. HLP on Bwala Line	The pump was delivered and Installation is underway
		Install 01 No. HLP on Kyabakuza line	The old pump available was overhauled and operating normally
		Install 03 No. Chemical Dosers	One out of three chemical dosers have been received and installed, the remaining two are to be delivered by 31/08/2015
		Desilt Nabajjuzi Intake	Works Completed
		Rehabilitation of Sewerage plant	Refurbishment of the Sewerage plant was completed
5	Mityana	Refurbishment of Water Works and other Corporation Premises	Works Completed
		Replacing of the piping system chemical dosing pumps	. Works Completed
		Reconfiguration of the High Lift Pumps	Completed
6	Entebbe	Acquisition of Standby Generator for the Waterworks.	Standby Generator was received and installed
		Completion of low lift pumps installation	Work was completed and operation of the old treatment commenced. The treated water volume has been augmented with a further 2000 m ³ /day

Continuous Improvement for Sustainable and Equitable Service Delivery

No	Area	Planned Interventions - FY 2014/15	Status June 2015
7	Iganga	Interconnection of transmission line to Kaliro road distribution to boost	Completed and pressure improved in Nampilika Area
8	Luwero	Construction of a 300 m ³ capacity reservoir at Nsozibili.	A Memorandum of Understanding between NWSC and the land owner has been signed and the contractor is on-site working on the tank
		Drilling of two additional boreholes	Drilling process in Progress
		Construction of additional sump	Land negotiations are complete and procurement is ongoing
		Install High lift Pump 60 m ³ /hr	Pump Installed and performing well at the old reservoir.
		Install Generator at the Sump house	Generator installed and performing well.
		02 No. Generators at Bore holes	Both of the generators have been installed and are operating effectively
9	Wobulenzi	Hydrogeological studies for additional production wells	Completed
		Drill and Sink 02 No. Production wells and pipe laying	Drilling process in Progress
		Install generators at boreholes No. 1 & 2 complete with all Changeover	The existing generators were repaired and are working well
		Redeepening of boreholes No. 02 and No. 03	Drilling process in Progress
10	Bombo	Installation of a high lift pump of 60m ³ /Hr at the sump house.	The highlift pump was delivered and subsequently installed

No	Area	Planned Interventions - FY 2014/15	Status June 2015
		Drill and Sink 02 No. Production wells and pipe laying	Drilling in Progress
		03. No.Generators for sump house and Boreholes 2,3 & 4 complete with Changeover Switch	Two generators have been received and installed. Two of the Boreholes are to be connected to that same generator and then an extra generator will be procured for the remaining one borehole
		Redrilling Bore hole No. 01	Drilling in Progress.
11	Kalisizo	Sinking two bore holes at Namagoma to increase water supply.	Drilling works in Progress
		Enlarge sump at the booster pump in Matale from 2,000 litres to 10,000	Procurement of land is in progress
		Purchase a generator for the booster in Matale	Procurement initiated and quotations being sourced.
		Install a pump of 17m ³ /hr to replace the faulty one in Namagoma	Pump identified, installation is to be done by 31/07/2015
		Purchase of pressure sand filters for the DN100 transmission line	Pressure filter identified from Bushenyi and transfer/installation planned for July 2015
12.	Kigumba	Replace borehole pump sets for Kinyara, Kabukye and Kija	The motors of Kija and Kabukye were replaced with new ones, while the Kinyara one is still running efficiently.
		Replacement of ½ inch line of 250meters in Kitwanga that was	The works were completed
		Purchase of two additional generators for Kabukye and Kija boreholes	The procurement was initiated.

Continuous Improvement for Sustainable and Equitable Service Delivery

No	Area	Planned Interventions - FY 2014/15	Status June 2015
		for Kabukye and Kija boreholes	
		Install 300m ³ Reservoir at Kadugu Hill	The procurement was deferred since it was deemed not so urgent given that the supply lines are of immediate concern than storage
		Install Voltage Stabilizers at the Kinyara, Kija boreholes and Reservoir	The procurement in progress
13.	Bweyale - Kiryandongo	Procure 01 No. Bore hole pump for Kiryadongo	Procurement in progress
		Procure a Generator for the old borehole pump for Bweyale	The generator was delivered and installed and is fully operational
		Construct 250m ³ Reservoir Tank at Kiryandongo	The procurement in Progress

3.4.3 Northern and Eastern: WSSP interventions Implemented during the FY 2014/15

#	Area	Summary description of the WSP intervention	Implementation Status
1.	Tororo	Install 04 No. Air Valves on Pumping Main	Pending supply
		Install 02 No. high lift pumps	Completed
		Replace 60 No. faulty control and 15 No. air valves on network	Completed
		Construct 300 m ³ reservoir tank	Completed
		Repair backwash tanks	Completed
		Re-sanding of filters	Completed

NWSC ISDP and WSSP: Plan for Financial Year 2015/2016

#	Area	Status and Description of the WSP intervention	Implementation Status June 2015
2.	Soroti	Connection of a dedicated power line from Opuyo Substation to Awoja treatment plant	Changed the plan to repair the generator change over-switch to as to solve the problem of power outage. The generator is now operational
		Repair of the generator at the water works to stabilize water production.	Completed and generator working well
		Repair of Teso, college Aloet tank	Completed and operational
		Replacement of faulty valve, fire hydrants and washouts	Completed
		Power inter connection at Kalaki booster station	Wiring of the 3 phase was completed. Application for the power meter has been initiated and is being following up.
		Replacement of bulk meters at the plant and main reservoirs	Completed
3.	Lira	Install 03 No. online boosters to boost pressures in Boroboro, Ayago and Juba road.	Negotiation for land still in progress. Pumps have been supplied awaiting acquisition of land.
		Reactivation of elevated steel tanks at Ireda, 2No (250m ³ and 420m ³) Capacity	Materials from central stores have been received. Work in progress.
		Redesigning of water filters at Kacung	Completed
		Water network intensification (2.5Km planned)	Completed
		Upgrade of Ngetta booster pumps from single to 3 phase	Completed
4.	Pader	Construction of 5 No. valve chambers	Completed
		Repair generators for the two boreholes	Repaired and are working properly
5.	Nebbi	Installation of 5 No. PSPs	Completed. The PSPs are in operation
		Construction of gabions at intake abstraction point to control	Completed.

Continuous Improvement for Sustainable and Equitable Service Delivery

#	Area	Summary description of the WSP intervention	Implementation Status June 2015
6.	Apac/ Aduku	Installation of booster pump	Work completed. Pump working
		Drilling of 2 boreholes in Aduku and 2 boreholes in Apac	Completed
		Replace 01 No. high lift pump.	Completed
7.	Gulu	Drilling, installation and connection of two boreholes to the distribution network to boost supply.	02 boreholes were drilled and we are awaiting the government valuer's report to enable acquisition of land and development of the boreholes.
		Catchment protection activities to make more water available for production.	Sensitization of the affected community leaders and members done in Pece stream and Oyitino. Enforcement currently ongoing.
		Increase water production from the existing source	Done by Configuring and connecting another raw water pump to increase abstraction
8.	Mbale	Procure and install the high lift pump and control panel for Nabumali	Contract awarded. Awaiting delivery.
		Identify and replace control valves in the trouble areas around town centre and senior quarters	Completed.
		Overhaul the standby generator for the Nakaloke booster	Procured a new one. New Pump delivered and installed.
		Construction of water tank at Busiu	Completed.
9.	Paidha	Renovate the gravity flow scheme to boost supply	First phase completed. Procurement of the contractor for second phase is ongoing.
		Install control valves and construct valve chambers in the	Installation of valves completed.
10.	Arua	Install high capacity high raw water pumps at water treatment	Installation completed.

#	Area	Summary description of the WSP intervention	ImplementationStatus June 2015
11.	Kitgum	Installation of new high lift pumps	Installation completed.
		Laying of second reservoir outlet line (700m)	Completed
		Overhaul of filters	Overhaul completed and sand topped up.
		Interconnect contact tanks	Completed, steady supply achieved.
		Systematic replacement of unreliable consumer meters	Replacement of defective meters is gradual and still on going
		Locate points and install air valves	Completed
		Reinstate the solar system at KTI	Initiation of a Contractor is at the initial stage, received one quotation and another supplier promised to forward his soon.
		Repair K-New borehole (Pump)	Completed. New pump was delivered and installed by static plant team on 30th June and 1st July 2015 and the system is working.
		Construct valve chambers	Work on going. To be completed in July 2015.
		Re-instate functionality of boreholes in Kitgum service area	Completed

3.4.4 Western and South Western Region: WSSP interventions Implemented during the FY 2014/15

No.	Area/Branch	Key WSSP undertakings	Status June 2015
1	Kisoro	Installation of a Generator Installation of Air release valves on the Pumping main Lowering of the Foot Valve Carrying an hydrological survey Overhaul/repair HLP pumps Increasing the Volume of water in the sump Replacement of poor quality pipes in the network 3Km	Done

Continuous Improvement for Sustainable and Equitable Service Delivery

No.	Area/Branch	Key WSSP undertakings	Status June 2015
		Construct house for Pump and Generator near Mubuga PSP Installation of a standby generator at Kisoro Hill Boost Station	Not Done
2	Masindi	Construction of Kihande Booster Pumping Station generator house.	Completed
		Procure and install a new generator set at Kihande booster station.	Procured, Installed and commissioned.
		Procure and install 4N0. Control valves and 4N0. Air Valves for effective network management.	4N0. Control valves installed. 4N0. Air valves are yet to be procured and installed.
		Construction of flood barriers at Kiyanja Waterworks.	Construction in progress
		Desludging of Anaerobic pond	In final completion stage
		Installation of 20N0. PSPs	Done
		Refurbishment of Masindi Area Office	Done
		Acquisition of Certificates of Title Deeds for NWSC landed assets in Masindi.	In progress
3	Hoima	Installation of 300m3 reservoir tank	Contract awarded for a reservoir tank Land identified Contract awarded & at shipping stage
		Procurement of land for 300m3 reservoir tank	
		Procurement of bigger capacity generator	
4	Kabale	Installation of a standby Raw water pump	Completed
		Install 2 No. Pressure filters at Kachwekano	Completed
		Procure surge vessels of volume 2-4m3	
		Construct an elevated reservoir	
		Install Rwanyana 50m3 steel Reservoir	Completed
		Procure two standby Generators	Completed
		Relocation of Rushoroza booster station to a conveniently lower level Construction of a booster station at Kihumuro – Ndorwa	


NWSC ISDP and WSSP: Plan for Financial Year 2015/2016

No.	Area/Branch	Key WSSP undertakings	Status June 2015
5	Rukungiri	Drilling at Marumba, Rwakabengo B, Nikola Pump house construction at Kagashe , Submersible pumps Siting and Drilling Supervision	Completed Completed Completed Completed
6	Bweyale	30KVA generator 250m3 reservoir 1NO bore hole drilling	Generator is operational, Drilling contract awarded
7	Kigumba	Replacement of Pump motors for Kigiya and Kabukye borehole Replacement of ½ inch line of 250meters in Kitwanga that was supplying customers with insufficient volumes of water and low pressure Install 300m3 Reservoir at Kadugu Hill Install Voltage Stabilizers at the Kinyara, Kija boreholes and Reservoir in Kididima Purchase of two additional generators for Kabukye and Kija boreholes	Improvement in billing as well improved pressures on this area Purchase of two additional generators and Installation of 300m3 Reservoir was deferred Voltage Stabilizers are Still under procurement
8	Fort portal	Installation of 198m3/hr high lift pump	Completed, in good running condition
		Installation of 50m3/hr raw water Standby pump	Pump installed with a capacity of 42m3/hr
		Modification of clarifiers and filters to increase volume and improve quality	Completed and commissioned with positive results
		Installation of a sewer lifting station and 2,500m sewer line for the Hospital	Design changed to compact treatment, to be implemented 2015/16 financial year,
		Upgrading of distribution mains Njara to Virika from 6" to 12"	Not done
		Kyegobe Booster station	Booster Complete tested pending commissioning

Continuous Improvement for Sustainable and Equitable Service Delivery

No.	Area/Branch	Key WSSP undertakings	Status June 2015
		Interconnection to kasusu Booster	Laid 120m of HDPE DN 50 Kasusu-Nsoro
		SOS Butebe	Laid 200m of DN 80 and 245m of DN
		Erect a 50m3 tank at Ihani	Contractors visited site, project handled by HQ
		Installation of a booster station at Kasusu	Booster installed pending power connection-Umeme
9	Kasese	installation of 3 Air valves in Nyakasanga Temporarily raising of dam weir relocation of old transmission line that had always been affected by floods	Completed
10	Mbarara	Kabale road water works abstraction & delivery lines upgrade Construction of the Weir Installation of standby filter Installation of 4 No. pump sets of high capacity at both plants Installation of 2 No. (100kva & 118kva) Capacitor banks for the plants or install soft starters Refurbishment of leaking booster houses Installation of 4No. 30m3/hr Booster standby pump sets Fabricate and fix bar screens Repair of filter nozzles Procure and install an overhead 150 m3 backwash tank Procure and install sewage ejector pump and generator Procure and install 2No. ball valves Procure and install 10 No. Gravity chemical dozers, Mixing tanks and stirrers. Tiling of alum mixing tanks	Completed Not Yet handled Not yet handled Procurement of two new Kabale road pump sets on going 01 installed at Ruharo Procurement process to be completed by August 2015 Contract awarded to Junaco (Lot 2) and deliver expected 30 working days after opening of a second LC To be done by next month – end July. Completed.

No.	Area/Branch	Key WSSP undertakings	Status June 2015
		Procure and install 3phase booster pump set Install 2 No. (500m3/hr) RW Pumps of higher capacity Install 2 No. 10" bulk water meters and 3 No. 12" for transmission and distribution lines Procure and install surge vessel on the newly laid transmission line Upgrade clarifier outlets from DN200 to DN 350 Re-sanding filters Install a 250m3 reservoir tank at Install 50m3 reservoir tanks at Kaliro health centre	Not yet done Sewerage pump set to be delivered Completed. Received only 02 at Kabale road Not done Contract awarded to Junaco Raw water pump sets in a lot awaiting board and solicitor generator approval Installed 03 Not done Not completed Not done Not yet done. Contract awarded Contract awarded
11	Kanungu	Installation of Generator Installation of 20m3/hr and 50m3Pumps Source protection Acquisition of land for tanks and water sources	Completed while some works are ongoing

A high-speed photograph of a water splash, creating a complex, crystalline structure of droplets and bubbles. The water is captured in mid-air, with sharp highlights and deep shadows that emphasize its texture. The background is a solid, vibrant blue, which contrasts with the white and light blue of the water splash. The splash originates from the top right and moves towards the center, leaving a trail of smaller droplets behind it.

*"Pure water is the world's first and
foremost medicine."*



A background image of a water splash, with a central droplet frozen in time, creating a crown-like shape. The splash is surrounded by concentric ripples. The image is overlaid with a semi-transparent blue layer where the text is located.

ISDP, PSP AND WSSP PLAN FOR FINANCIAL YEAR 2015/2016

Continuous Improvement for Sustainable and Equitable Service Delivery

CHAPTER FOUR

PLAN FOR INFRASTRUCTURE SERVICE DELIVERY (ISDP) AND WATER SUPPLY STABILIZATION (WSSP) FOR FY 2015/16

4.1 Planned Water Mains Extensions for FY 2015/2016

4.1.1 Kampala Metropolitan Area: Planned Water mains extension FY 2015/16

Item	Areas for Mains Extensions	Length(m)
1.	Branch 1: CITY CENTRE	2,000
	i. Prince charles drive	500
	ii. Nakasero hill lane	500
	iii. Mawanda rd	500
	iv. Nsambya West	500
2.	Branch 7 - NAKULABYE	1,300
	i. Kibumbiro to SAMONA factory	800
	ii. Kosovo-LUNGUJJA	500
3.	Branch 2 - KANSANGA	2,000
	i. Namwongo-Kisugu	1,500

Continuous Improvement for Sustainable and Equitable Service Delivery

Item	Areas for Mains Extensions	Length(m)
	ii. Nsambya West	500
4.	Branch A - BUNGA	1,900
	i. Kawuku	300
	ii. Mulungu	200
	iii. Kalungu	500
	iv. Ggaba	200
	v. Munyonyo	400
	vi. Buziga	300
5.	Branch L- NDEJJE	9,000
	i. Kibiri, Kanaaba, Kigo.	2,000
	ii. Lubugumu-Mutungo	3,000
	iii. Mutungo	4,000
6.	Branch B - SALAMA	2,900
	i. Makindye kizungu	500
	ii. Badongo	700
	iii. Massajja,	1000
	iv. Lukuli Nanganda	700

Item	Areas for Mains Extensions	Length(m)
7.	Branch 3 - NAJJANANKUMBI	4,700
i.	Zanna Block	1,000
ii.	Bunamwaya Zanna	500
iii.	Lubowa Lindsay Cottages	1,000
iv.	Zanna	700
v.	Lubowa	700
vi.	Roofings	800
8.	Branch F - KANYANYA	3,500
i.	Namere	500
ii.	Kyebando	1000
iii.	Kisaasi	500
iv.	Kulambiro	500
v.	Kanyanya	500
vi.	Kanyanya	500
9.	Branch G - MATUGGA	19,300
i.	Wattuba-Watindo.	3,500
ii.	Wattuba-Watindo.	3,500
iii.	Mabanda Junction to Sanga.	2,000

Item	Areas for Mains Extensions	Length(m)
	iv. Kiryowa. Blocks:	2,800
	v. Off Jjokolera, Kiwalimu.	900
	vi. Lwadda.	2,500
	vii. Kirinyabigo	1,500
	viii. Nasse Road Kiryagonja.	800
	ix. Matugga TC -Kiti	1,800
10.	Branch 4 - BWAISE	5,100
	i. Ttula	1,000
	ii. Jinja Kalori	1,000
	iii. Jinja Kalori	800
	iv. Maganjo B	800
	v. Maganjo B	1,000
	vi. Namere	500
11.	Branch 5 - NTINDA	2,000
	i. Kiwatule,	500
	ii. Ntinda, Naguru katale	1000
	iii. Bukoto,	500
12.	Branch E - GAYAZA	6,100
	i. Kasangati Kira Road	1,000
	ii. Buwate	500
	iii. Bulamu	1,000

Item	Areas for Mains Extensions	Length(m)
	iv. Kitezi	1,000
	v. Kitetika	1000
	vi. Masooli,	1100
	vii. Seeta,	500
		-
13.	Branch 8 - NATEETE	5,500
	i. KITEBI	1500
	ii. Busega	1,000
	iii. Kabowa 2813	1,000
	iv. Wankulukuku	1,000
	v. Kabowa,	1,000
14.	Branch J - KYENGERA	8,000
	i. Nabingo-tega	2,000
	ii. Kazinga	1,000
	iii. Namagoma	1,000
	iv. Kyengera-Nabaziza	3,000
	v. Nabingo-nsangi	1,000
15.	Branch 9 - NANSANA	7,000
	i. Wamala road	1,500
	ii. Gganda	1,200
	iii. Kibwa Kazinga	500

Item	Areas for Mains Extensions	Length(m)
iv.	Ssenge City Secondary	700
v.	Luwuge Rd Senge	700
vi.	Katooke Kastreet	500
vii.	Kyebando, Kabulengwa	1,200
viii.	Hoima Rd,	700
16.	Branch B - SEETA	16,500
i.	Namyoya to Kiwanga	3500
ii.	Namyoya to Kiwanga	2000
iii.	Kiwango to Nabusugwe,	2000
iv.	Nabusugwe to Bukerere	1500
v.	Kiwango to Namwezi	2500
vi.	Jomayi Estates Namwezi	2000
vii.	Nantabulirwa/Kolo	1000
viii.	Namyoya	2000
17.	Branch B - MUKONO	19,100
i.	Nangwa TC	1,500
ii.	Kyungu	1,000

Item	Areas for Mains Extensions	Length(m)
iii.	Nabuti	800
iv.	Kitete Gulu	800
v.	Nabuti	1,000
vi.	Nsambwe	1,000
vii.	Nsube	1500
viii.	Ntawo Nyenje Budugala	1,000
ix.	Ntawo Nyenje Budugala	1,500
x.	Bajjo	1,000
xi.	Takajunge	1,000
xii.	Gulama	1,000
xiii.	Bwefulumya and Budugala Namawojjolo	2,000
xiv.	Namumira - Dandira	1,000
xv.	Kyetume	3,000
18. Branch C - KIREKA		11,000
i.	Bukasa 3" main extension	500
ii.	Bukasa St James C.O.U	1,000
iii.	Bukasa Asante RD	1,000
iv.	Kirinya -Kikonko	500
v.	Kasokoso Kiganda	500
vi.	Mbalwa Police	500
vii.	Bukasa quarry Rd	1,000
viii.	Bukasa Councilor rd	500

Item	Areas for Mains Extensions	Length(m)
ix.	Bukasa Police	800
x.	Bukasa, kiyimba RD	1,000
xi.	Bukasa Hon Wamai	500
xii.	Namataba -Homesdarlen	200
xiii.	Namataba -Dove light	800
xiv.	Kirinya Kito	600
xv.	Kirinya Kito	600
xvi.	Kasokoso Kabaka to kiganda	1,000
19.	Branch - WAKISO	18,900
i.	Kavumba Estates,	2,000
ii.	Konna Trading Centre - Estates,	1,000
iii.	Temangalo road,	500
iv.	Post Office - Kayunga,	2,000
v.	Hoima road	1,000
vi.	Ring road,	1,200
vii.	Butera road,	1,000
viii.	Kayunga - Gombe,	1,200
ix.	Kayunga	1,000
x.	Bugembegembe	2,000
xi.	Kasengejje	2,000

Item	Areas for Mains Extensions	Length(m)
xii.	Kasengejje road Loop	1,000
xiii.	Mpunga Hill, HDPE	1,000
xiv.	Kikookiro, HDPE	2,000
20.	.Branch D - KYALIWAJJALA	3,100
i.	Extensions in Kito	500
ii.	Kiryamuli-Namugongo	500
iii.	Extension in Kirunda Mbata	500
iv.	Extension in Jomayi-Nsasa on blocks	500
v.	Mains intensifications Najjera	100
vi.	Extension in Bulindo	1,000
21	Branch-Bulenga	2,500
i.	Nakuwade	1,500
ii.	Musoke rd - Nakuwade	1,000

Item	Areas for Mains Extensions	Length(m)
22	Branch - NAKAWA	2,300
	i. Block 1733	500
	ii. Block 1830 & 1831	400
	iii. Block 2128	200
	iv. Bugolobi Flats	1,000
	v. Block 2031	200
23	KAKIRI	5,000
	Various Locations	5,000
TOTAL PLANNED WATER MAINS EXTENSIONS FOR KAMPALA WATER (KW)		158,700

4.1.2 Central Region: Planned Water mains extension for FY 2015/16

No	Location	Length (meters)
1	JINJA	23,900
	i. Naminya East zone	1,500
	ii. Katawe kenko	1,500
	iii. Bukeka after kirugu	1,500
	iv. Binasali Road	1,000
	v. Nakibbizi	1,000
	vi. Kizungu ,Namwezi,Wampala,Kitogoma, at the hills	3,100
	vii. Opposite wakisi sub county	1,000
	viii. Buwenda Kyekide	2,000
	ix. Wairaka B	1,000

Continuous Improvement for Sustainable and Equitable Service Delivery

No	Location	Length (meters)
	x. Musiima	1,000
	xi. Bugembe booster Dedicated feeder line	2,000
	xii. Milo mbiri	800
	xiii. Magamaga line near Kampala University	500
	xiv. Njeru booster	500
	xv. Pumping Main for Nyenga reservoir	1,000
	xvi. Distribution mains for Nyenga	2,000
	xvii. Pumping Main for Nanso reservoir	1,500
	xviii. Distribution mains for Nanso reservoir	1,000
2	BUWENGE	11,000

No	Location	Length (meters)
	i. Karamoya	2,000
		2,000
	ii. Busiya	2,000
		1,500
	iii. Jinja -kamuli road	2,000
		1,500
3	LUGAZI	5,000
	i. Namataba	2,000
	ii. Kasoga	2,000
	iii. Kitega	1,000

Continuous Improvement for Sustainable and Equitable Service Delivery

No	Location	Length (meters)
4	MUBENDE	12,000
	i. Kyamukona	5,000
	ii. Kyamukona	3,500
	iii. Kangulumira	3,500
5	KIGUMBA	12,000
	i. Kyakibanga	2,000
	ii. Titi	2,000
	iii. Mpumwe	2,700
	iv. Katamarwa	2,800
	v. Kyamugenyi	2,500

No	Location	Length (meters)
6	BWEYALE/KIRYANDONGO	10,000
	i. kingstone	2,000
	ii. kiryandongo	3,000
	iii. christine road	2,000
	iv. nyamusasa	3,000
7	MASAKA	20,000
	i. Bukalasa	2,000
	ii. Kyamusansala	2,000
	iii. Kakunyu to Bbaala	2,000

No	Location	Length (meters)
	iv. Kayunga - Kitenga	3,000
	v. Mikoni - Kiwanga	1,200
	vi. Kayirikiti	2,000
	vii. Bisanje - Kalevu	2,000
	viii. Kyabakuza - Kiwanga	2,000
	ix. Ndegeya - Lwabusisi	1,500
	x. Nyendo	1,500
	xi. Kijjabwemi	800
8	KALUNGU	13,500
	i. Katigondo - Kalungu	8,500

No	Location	Length (meters)
	ii. Mitale	2,500
	iii. Nabutongwa	2,500
9	LUWEERO	12,800
	i. Kasoma Zone A	10,000
	ii. Kizito	1,300
	iii. Kasoma Zone B	2,000
	iv. Kavule Zone	2,000
	v. Bukuma	1,500
	vi. Kikubajinja Zone	1,000
	vii. Kalongo B Zone	600

No	Location	Length (meters)
	ix. Kalongo C	700
	x. Kiwogozi Zone	2,000,
10	BOMBO	13,000
	i. Bajjo Area	3,000
	ii. Bombo central Water Mains	3,000
	iii. Bajjo Area	2,000
	iv. Nyimbwa trading center	3,000
	v. Nyimbwa trading center	2,000
11	WOBULENZI	8,000
	i. Katikamu SDA	3,000

No	Location	Length (meters)
	ii. Wobulenzi Town Council	2,000
	iii. Upgrade of boreholes transmission mains (3" to 6")	3,000
12	ZIROBWE	4,000
	i. Wabutungulu	2,700
	ii. Bubengwe	1,300
13	SEMUTO	10,000
	i. Various locations	5,000
	ii. Various locations	5,000

No	Location	Length (meters)
14	MITYANA	9,500
	i. Kigalama -Myanzi	3,000
	ii. Intensification around Myanzi Area	2,000
	iii. Ssekanyonyi Rd-Kireku	2,500
	iv. Kiganwa -Indibulungi Rd	2,000
15	KYOTERA	10,000
	i. Jovena Fuel Station - Kasaali stage	2,000
		1,700
	ii. Reservoir - Rashid Muliira Kyakonda	3,100
	iii. Mugasi - Kayondo Studio	1,000
	iv. PSP Kamwanyi - Down Kabasese	1,400

No	Location	Length (meters)
	v. Semwanga - Ssebugenyi	800
16	KALISIZO	8,000
	i. Manyama	4,000
	ii. Ninzi-Mitondo	4,000
17	SANJE	5,000
	i. Kyapa	2,500
	ii. Bubanga	1,000
	iii. Kabano	1,500

No	Location	Length (meters)
18	MUTUKULA	5,000
	i. Kasanvu route	2,000
	ii. Central - Lwazi	1,500
	iii. Lwazi - Prison	1,000
	iv. Kabawo	500
19	KAKUTO	6,000
	i. Bigada - Kasambya	2,000
	ii. Bigada - Kiganga	2,000
	iii. Kitasiba	2,000

No	Location	Length (meters)
20	KAMULI AREA	8,000
	i. Gabula road	1,500
		600
	ii. Dubek road	1,200
		500
	iii. Kagulu road	1,500
		1,200
	iv. Namwendwa road	1,500
21	MBULAMUTI BRANCH	9,000

No	Location	Length (meters)
20	KAMULI AREA	8,000
	i. Gabula road	1,500
		600
	ii. Dubek road	1,200
		500
	iii. Kagulu road	1,500
		1,200
	iv. Namwendwa road	1,500
21	MBULAMUTI BRANCH	9,000

No	Location	Length (meters)
	i. Buwanana B.	1,500
		1,000
	ii. Nakalanga	2,500
		2,000
	iii. Bulondo	1,500
		500
22	ENTEBBE	27,000
	i. Bugonga	3,000
	ii. Kitumbu Road	2,000
	iii. Bwerenga from Kawempe TC	3,000

No	Location	Length (meters)
	iv. Bwerenga - Lakeshore	3,000
	v. Bugiri from Kawempe TC	3,000
	vi. Bugiri - Lakeshore Estates	3,000
	vii. Makandwa Intensifications	2,200
	viii. Bunono	3,000
	ix. Canaansites - Kitende B	1,000
	x. Kabale	2,000
	xi. Makandwa along Southern By pass	1,400
	xii. Lubowa Gardens	400
23	IGANGA	16,500

No	Location	Length (meters)
	i. Buseyi -Nakalama	2,500
	ii. Nakalama proper	3,000
	iii. Bugabwe	3,000
	iv. Nakilurwe	2,000
	v. Balondemu - Buseyi	3,000
	vi. Buwongo-Nampirika	3,000
	vii. Balondemu - Buseyi	
24	BUGIRI BRANCH	5,500
	i. Kapyanga to Kagali	2,000
	ii. Kagali to Muyenga	2,000
	iii. Muyenga-Ndebba	1,500

Continuous Improvement for Sustainable and Equitable Service Delivery

No	Location	Length (meters)
25	KALIRO BRANCH	8,000
	i. Kasokwe	3,000
	ii. Hajji Bumba road	1,500
	iii. Kamuli road	1,000
	iv. Nkono road	1,500
	v. NTC line	1,000
26	MAYUGE BRANCH	5,500
	i. Giriri - Maina	1,500
	ii. Giriri -Yusuf Balita road	1,000
	iii. Iwamba	1,000

No	Location	Length (meters)
	iv. Iwamba/Buwolya	1,000
	v. Lugolole	1,000
27	BUWAMA	9,000
	i. Various locations	2,000
	ii. Various locations	4,000
	iii. Various locations	3,000
28	KAYABWE	9,200
	i. Various locations	2,000
	ii. Various locations	4,200

No	Location	Length (meters)
	iii. Various locations	3,000
29.	KIGANDA	5,000
	i. Various locations	5,000
30.	NAKASEKE	5,000
	i. Various locations	5,000
	TOTAL	306,400

Continuous Improvement for Sustainable and Equitable Service Delivery

4.1.3 Northern and Eastern Region: Planned Water mains extension for FY 2015/16

#	Location	Length (m)
1	APAC-ADUKU-IBUJE	8,000
	i. Abatwa Road-Aduku	1,500
	ii. Abatwa Road-Aduku	1,000
	iii. Owanga Road-Apac	1,500
	iv. Owanga Road-Apac	1,500
	v. Akokoro Road-Ibuje	1,000
2	ARUA	16,000
	i. Bondo Barracks Extension (Arua - Kla Rd)	6,000
	ii. Bondo Barracks Extension (Arua - Kla Rd)	8,000
	iii. Bondo Barracks Extension (Arua - Kla Rd)	
3	GULU	10,000
	i. Wii Aworanga	2,000
	ii. Koch Ongako	5,000
	iii. Pece Acoyo	3,000
4	KITGUM	9,000
	i. Auch Towards Opira Galdino	2,000
	ii. Pandwong Beyond Health	1,500
	iii. Nyiki Nyiki	1,500
	iv. Auch	1,000

Continuous Improvement for Sustainable and Equitable Service Delivery

#	Location	Length (m)
	v. Cam Cam	1,500
	vi. Lamit Kapim North	1,500
5	LIRA	15,200
	i. Adidigweno.	700
	ii. Amucha I	2,500
	iii. Amucha II	2,700
	iv. Amucha III	500
	v. Anai Okii.	2,800
	vi. Anywalonino-Behind 291 hotel	1,000
	vii. Barlwala upper	1,000
	viii. Boroboro	1,200
	ix. Omito Bung	2,800
6	MBALE	10,000
	i. Kimwanga-Mbale	2,000
	ii. Kabwangasi-Tiira-Mbale	2,000
	iii. Various	4,000
	iv. Lwangoli-Mbale	2,000
7	SIRONKO	4,000
	i. Buyaga Village-Sironko (Phase 1)	2,800
	ii. Buyaga Village-Sironko (Phase 2)	1,200

#	Location	Length (m)
8	BUDADIRI	17,500
	i. Bugiboni Village-Budadiri	11,000
	ii. Mutufu-Budadiri	3,500
	iii. Gibinda-Budadiri	3,000
9	NEBBI	7,000
	i. Tinkori Road	2,000
	ii. Makor Road	2,000
	iii. Obote Road	2,000
	iv. Jaggi Road	1,000
10	PAIDHA	6,000
	i. Jupomocho Road	1,000
	ii. Jupomocho Road	2,000
	iii. The-Gholi Road	1,000
	iv. Pagisi Road	1,000
	v. Pagisi Road	1,000
11	PADER	5,000
	i. Paiwula	2,800
	ii. Pader Kilak	800

Continuous Improvement for Sustainable and Equitable Service Delivery

#	Location	Length (m)
	iii. Pader Town College	400
	iv. Latanya Road	1,000
12	SOROTI	5,000
	i. Opiyai B	1,000
	ii. Kaberamaido	1,000
	iii. Amuria	1,000
	iv. Oderai	1,000
	v. Agama	1,000
13	MOROTO	10,000
	i. Along Acholi Inn	3,000
	ii. Natumkaskou	3,000
	iii. Various	4,000
14	TORORO	30,000
	i. Mukujju	4,000
	ii. Merekit	6,000
	iii. Various	3,000
	iv. Jinja Road	6,000
	v. Kisoko	5,000
	vi. Seta	6,000

#	Location	Length (m)
15	ADJUMAN	10,000
	i. Various Location	10,000
16	WANDI	14,000
	i. Various Location	14,000
	TOTAL - NORTHERN & EASTERN REGION	176,700

4.1.4 Western and South Western Region: Planned Water mains extension for FY 2015/16

#	Area/Location	Length (m)
1	MBARARA	29,200
	Mukono igano	3,000
	Bubaare next to Airfield	3,000
	Nyarubanga to Katebe	5,000
	Kaberebere Bulamu Road	5,000
	Rweziringiro Cell B	
	Kabirizi Village	2,800
	Kaberebere Birere	2,800
	Kaberebere Green Hill School	3,800

Continuous Improvement for Sustainable and Equitable Service Delivery

#	Area/Location	Length (m)
2	RUBINDI	7,000
	Nombe trading centre	2,000
	Ruhumba	2,000
	Ncune	3,000
3	KINONI	6,000
	Nyamateete, Kitwe	3,000
	Rwengyeri, Rwanga	3,000
4	FORTPORTAL	9,500
	Kacwamba- Booster	500
	Gweri	2,000
	Kyakaigo	2,000
	Palace Ring	4,000
	Njara - Nsawu	1,000
5	KASESE	5,500
	Mains Extensions to Mubuku Trading centre	3,000
	Intensification Mudahurira lane	1,500
	Connection of the proposed reservoir to the proposed pump	1,000

#	Area/Location	Length (m)
6	KABALE	14,500
	Kihumuro Hill	5,000
	Kihumuro Hill	4,000
	Kikungiri Hill	3,500
	Kikungiri Hill	2,000
7	BUSHENYI	11,200
	Kyamuhunga T/C to Comboni Hospital Extension	1,700
	Bumaire to Rwakatende S.S. Extension	3,000
	Nyakabirizi to Bwera Primary School	
	Kizinda to Nyabubaare Health Centre Extension	
	Kyeizooba Girls to Mulugwa SSS	6,500
	Kashenyi TC to Kyandago TC	
	Kashenyi TC to Kyandago TC	
8	KABWOHE	7,000
	Mukinga Extension	2,500
	Kateete High School Extension	2,000
	Mubanga Road Intensification	1,000

Continuous Improvement for Sustainable and Equitable Service Delivery

#	Area/Location	Length (m)
	Sheema Shopping Arcade Intensification	1,500
9	KITAGATA	7,000
	Muhito Extension	3,000
	Kituutu Extension	1,500
	Kainamo Extension	2,500
10	MASINDI	8,000
	Karujubu/Kitojo Communities.	2,500
	Kyakasozi /Kiduru Communities	2,000
	Kiroya,Gorola, Kisarabwire 2	3,500
11	HOIMA	9,600
	Bugambe rd to Butiaba rd	1,000
	Butiaba rd left side	1,000
	Butiaba rd right side	1,000
	Kisiramu II Heritage rd	1,100
	Rusembe I Canoone rd	900
	Nyakasenyi rd-BH 6	800

#	Area/Location	Length (m)
	Busisi-Biribonya rd	500
	Kasasa-Busesega rd	500
	Busisi west-Makanzi rd	500
	Kasingo-Kihoireto rd	700
	Rukonge -AK Gubaza rd	600
	Off Kyarwabuyamba-Haruna rd	500
	Mparo south -Muhamud Kaite rd	500
12	KISORO	7,000
	Extension to Matinza-Kiraro	3,000
	Water mains Extension to Kabaya	2,000
	Water Mains Extension to Nyakinama	2,000
13	RUKUNGIRI	5,500
	Rwakabengo B to Kanyinya	1,500
	Rwakabengo B to Kanyinya	1,500
	Rwakabengo -Bwoma	1,000
	Rwakabengo -Bwoma	1,500

#	Area/Location	Length (m)
14	KANUNGU	8,000
	Kihihi	3,000
	Kambuga	3,000
	Kambuga	2,000
15	KAMWENGE	6,000
	Kamwenge - Kitonzi	3,500
	Kamwenge - Kayembe	2,500
16	IBANDA	6,000
	Rwomuhoro and Kanoni	3,000
	Nabushikye	3,000
17	LYANTONDE	8,000
	Kabatemile	4,000
	Nakinobe	4,000

#	Area/Location	Length (m)
18	NTUNGAMO	8,000
	Various locations	2,000
	Various locations	6,000
19	RUSHERE	8,000
	Various locations	4,000
	Various locations	4,000
20	MPONDWE	25,000
	Various locations	25,000
	GRAND TOTAL	196,000

4.1.5 Summary of Planned Water mains extension for FY 2015/16 by Region

#	Region	Planned Length (Meters)
1	Kampala Metropolitan Area	158,700
2	Central	306,400
3	Northern and Eastern	176,700
4	Western and South Western	196,000
5	Other New Towns	100,000
Total		196,000

*** New towns envisaged to be taken over by NWSC during the FY 2015/16*

4.2 Planned Sewer Mains Extensions for FY 2015/2016

4.2.1 Kampala Water: Planned Sewer mains extension for FY 2015/16

4.2.1

Item No.	Branch	Location	Length (Meters)
1	Nakawa	Naguru Katalima	1,500
2	Ntinda	Semawata Rd	1,000
3	Bwaise	Kawempe	2,000
		Makerere - Kikoni	2,000
4	City Centre	Mengo Kisenyi	5,200
Total			11,700

4.2.2 Central Region: Planned Sewer mains extension for FY 2015/16

#	Area/Location	Length (Meter)	#	Area/Location	Length (Meter)
1	JINJA	1,700	2	MASAKA	2,500
	i. Bukesa road	200		i. Mulago & Mutese Royal University	2,500
	ii. Clive road east	250			
	iii. Scott lane	210	3	ENTEBBE	1,000
	iv. Rubaga road	210		i. State House	1,000

Continuous Improvement for Sustainable and Equitable Service Delivery

#	Area/Location	Length (Meter)
	v. Batambuze road	210
	vi. Sesanga road	150
	vii. Mvule Crescent	150
	viii. Walukuba and Muvule crescent replacement	320
Total Sewer Extensions		

#	Area/Location	Length (Meter)
4	IGANGA	1,000
	i. Continental - Kasokoso	1,000
		6,200

4.2.3 Northern and Eastern Region: Planned Sewer mains extension for FY 2015/16

#	Description	Length (m)
1	GULU	1,000
	Jinnah and Awere road	1,000
2	MBALE	1,300
	Namatala Namusi Lane	1,300

#	Description	Length (m)
3	SOROTI	1,000
	Soroti Hotel	1,000
4	TORORO	1,100
	Industrial Lane	600
	Mbale Road	500
	Total	4,400

4.2.4 Southern and Western Region: Planned Sewer mains extension for FY 2015/16

#	Area/Location	Length (Meter)
1.	MBARARA	1,000
	Extension along Galt road	1,000
2.	FORTPORTAL	400
	Malibu Rd	400
3.	MASINDI	1,000
	Masindi Hospital & TASO / Kamese road	1,000

#	Area/Location	Length (Meter)
4.	HOIMA	1,200
	Extension along Main street	1,200
5.	KISORO	800
	Chuhu Road	800
	TOTAL	4,400

4.2.5 Summary of Planned Sewer mains extension for FY 2015/16 by Region

#	Region	Planned Length (Metres)
1	Kampala Metropolitan	11,700
2	Central	6,200
3	Northern and Southern	4,400
4	Southern and Western	4,400
Total		26,700

Continuous Improvement for Sustainable and Equitable Service Delivery

4.3 Planned Public Stand Posts (PSPs) for FY 2015/2016

4.3.1 Kampala Metropolitan Region: Planned PSPs for FY 2015/16

Branch	Location	No. of PSPs
Bunga	Slums around Ggaba Landing area	50
Nateete	Slums around Nalukolongo to Busega	50
Kawempe	Katanga and Bwaise slums	70
Nakulabye	Kasubi and Kawaala Slums	30
Total		200

4.3.2 Central Region: Planned PSPs for FY 2015/16

#	Area/Branch	Location	No. of PSPs	#	Area/Branch	Location	No. of PSPs
1.	Jinja	Various Locations	15	15.	Luwero/Wobulenzi/Bombo	Luwero, Wobulenzi, Semuto, Zirobwe, Bombo	20
2.	Buwenge	Various Locations	5	16.	Kalisizo	Matale Kiwenda ,Bubangu, Katasiba, Bigada, Central, Kyakonda	5

NWSC ISDP and WSSP: Plan for Financial Year 2015/2016

#	Area/Branch	Location	No. of PSPs
3.	Lugazi	Namataba, Kayanja, Kitega, Namengo, Kikondo, Kikambwe	7
4.	Mubende	Mubende	10
5.	Masaka	Various Locations	12
6.	Kalungu	Various Locations	5
7.	Mityana	Various	10
8.	Entebbe	Bwerenga (2 no.), Bugiri (2 no.), Kawempe, Kabale,	15
9.	Iganga	Various Locations	10
10.	Mayuge	Various Locations	5
11.	Kaliro	Various Locations	5
12.	Bugiri/Naluwerere /Buwuni	Various Locations	10
13.	Kamuli	Various Locations	10
14.	Mbulambuti	Various Locations	5

#	Area/Branch	Location	No. of PSPs
17.	Kyotera	Various Locations	6
18.	Sanje	Various Locations	3
19.	Kakuuto	Various Locations	3
20.	Mutukula	Various Locations	3
21.			0
22.	Lyantonde	Various Locations	10
23.	Kigumba	Various Locations	8
24.	Bweyale/Kiryandongo	Various Locations	8
	TOTAL		190

Continuous Improvement for Sustainable and Equitable Service Delivery

4.3.3 Northern and Eastern Region: Planned PSPs for FY 2015/16

#	Area	No of PSPs
1	TORORO	10
i.	Akapa	2
ii.	Katerma	1
iii.	Papoli	1
iv.	Asinget	1
v.	Ndaiga	2
vi.	Iyolwa	1
vii.	Busitema	2
2	SOROTI	4
i.	Soroti Municipality	2
ii.	Amuria-Dakabela	1
iii.	Kaberamaido-Kalaki	1
6	LIRA	5
	Lira Municipality	5

#	Area	No of PSPs
3	MOROTO	5
	Moroto	5
4	APAC/ADUKU	15
i.	Aduku(Aboko, Adyeda, Cheawente)	5
ii.	Apac(Agulu, Owang,)	5
iii.	Ibuje(Ibuje town council)	5
5	ARUA	11
i.	Onduparaka	2
ii.	Ajono	2
iii.	Adroyi	1
iv.	Arivu	2
v.	Bondo	2
vi.	Oreku	2

#	Area	No of PSPs
	Lira Municipality	5
7	PADER	10
i.	Kwonkic,	2
ii.	Paipir,	2
iii.	Olwonguu,	2
iv.	Kinen,	2
v.	Lagwai seed,	1
vi.	Obol akal rd	1
8	NEBBI/PAIDHA	20
i.	Nebbi	10
ii.	Paidha	10

#	Area	No of PSPs
9	KITGUM	5
i.	Kitgum TC	5
10	MBALE	50
i.	Mbale	20
ii.	Budadiri	15
iii.	Sironko	15
11	GULU	10
i.	Gulu Municipality	10
TOTAL		145

4.3.4 Western and Southern Region: Planned PSPs for FY 2015/16

Area	Location	No. of PSPs	#	Area	Location	No. of PSPs
1. Kisoro	Nyakabande, Mutolere, Mubuga, Nyarusiza, Iryaruhuri	5		9. Rukungiri	Rukungiri Municipality	10
2. Masindi		0		10. Ibanda		0
3. Hoima	Mparo, Busisi, Kahooru and, Bujjumbura Divisions	15		11. Bweyale	Kiryandongo, Kyakalyabe, Bweyale, Bweyale to Kiryandongo Road	28
4. Kabale	Nyarutuntu, Kazinero, Rwanyena	48		12. Kigumba	Kijgya, Jeeja, Katamarwa, podorwa, Kyakibanga	20
5. Kitagata	Kyabingo, Bwoma TC, Kasaana-Kyabiingo, ishenyi, Karugorora, Rukondo	10		13. Fort portal	Kijula road, Gweri, Kyakaigo other areas in Fort Portal Municipality	20
6. Kabwohe	Rwembogo, Itendero, Kemichera, Rwentunda, Nyakashyambya, Rushozi	10		14. Kasese	Nyamwamba and Central Divisions	38
				15. Mbarara		0
7. Bushenyi	Rwenjeru TC, Nyakabirizi, Ntungamo TC, Kyeizooba, Kyamuhunga, Kizinda, Ncucumo, St Kaggwa	10		16. Kanungu	Kihihi, Kanyatorogo	10
8. Kamwenge		0		17. Rushere		0
				TOTAL		224

4.3.5 Summary of Planned PSPs for FY 2015/16 by Region

#	Region	Planned (Kms)
1	Kampala Metropolitan	200
2	Central	190
3	Northern and Sourthern	145
4	Western and South Western	224
Total		759

4.4 Water Supply Stabilisation Plan (WSSP): Planned Interventions for FY 2015/2016

4.4.1 Kampala metropolitan Area: WSSP Planned Interventions for FY 2015/16

#	Planned intervention 2015/16
i.	Construction of 3Km DN 200mm main from Buloba (mityana rd) via Temangalo road to Wakiso
ii.	Construction of 5km DN 200mm main from Buloba (mityana rd) via Temangalo road to Wakiso
iii.	Installation of 100M ³ Steel Tank at kabaka's Place Kyambogo
iv.	Installation of 1000M ³ Steel Tank at Kayanya Hill
v.	Installation of 1000M ³ Steel Tank at Mutudwe Hill
vi.	Installation of 600M ³ Steel Tank at Lugoba Hill
vii.	Construction of a booster house at Centenary park, pumping main DN250 to transfer six million litres from Gun hill to Naguru.

#	Planned intervention 2015/16
viii.	Lay a DN350mm main from Nakumati to Kanyanya booster,
ix.	Lay a pumping main DN250mm to Kanyanya reservoir
x.	Lay a distribution main DN300mm through Komamboga to Gayaza road
xi.	Lay a DN250mm main from Luteete via Masooli to Nanganbo 3km,
xii.	Lay a DN300 main from Bwaise to Kawempe to increase water on bombo rd
xiii.	Installation of 60Nos air valves along major mains (Jinja, Bombo, Nakulabye, Nalumunye)
xiv.	Connect DN 350 on Jinja road from DN400 from Muyenga to relieve the DN 600 that supplies Kampala north
xv.	Laying a dedicated main DN150, 2km to Buziga tank
xvi.	Upgrading main from DN100 to DN150 PVC (1.2km) in Kisugula-Mutundwe
xvii.	Constructing of 120Nos chambers to protect valves and make them accessible and easier to manage.
xviii.	Installation of 08Nos- boreholes to be drilled (Sonde, Seguku, Masooli, Nsangi and Kiwenda)
xix.	08No-Pumpsets complete with electric control panel installed at 08 boreholes
xx.	3km of 6" Upvc pipe be laid around Nabaziza hill kyegeza
xxi.	2km of 6" Upvc pipe be laid Bukere road to Goma trading centre –seeta branch
xxii.	Lay 18KM of 3" pumping main delivery from the 08 boreholes laid
xxiii.	Lay a DN 200mm from Kira via Bulindo, Kasangati,

4.4.2 Central region: WSSP Planned Interventions for FY 2015/16

#	Planned Interventions by Area
1	JINJA AREA
	i. 01 No. booster pump set for Njeru
	ii. 01 No. High lift Pump
	iii. 01 No. Raw Water Pumps
	iv. 02 Standby power generator sets for booster pumping stations
	v. Booster Pumping station for Nanso
2	BUWENGE BRANCH
	i. 02 No. Borehole Pumps for Buwenge
	ii. 01 No. booster pump set
3	LUGAZI AREA
	i. 02 No. Submersible Borehole pump sets
	ii. 01 No. High lift pump set
	iii. Installation of two borehole pums at Kawuku

Continuous Improvement for Sustainable and Equitable Service Delivery

#	Planned Interventions by Area
4	KIGUMBA AREA
	i. 01 No. Borehole Pump
	ii. Procurement of chlorine Gravity Dozer
	iii. 02 No. Submersible pumps 7.5 KW
5	BWEYALE
	i. 02 No. Borehole Pumps
6	BUGIRI/NALUWERERE/BUWUNI BRANCH
	i. Hydrogeological studies and drilling of 1 No.borehole
7	KALIRO BRANCH
	i. 01 No. Borehole pump
	ii. 01 No. Chemical Dozer
8	MAYUGE BRANCH
	i. 01 No. on-line dozer for post chlorination
9	MUBENDE AREA

#	Planned Interventions by Area
	i. 01 No. High lift pump
	ii. 01 No. Raw Water Pump
	iii. 02 No. Salt Electrolyzer
	iv. 02 No. Borehole pump sets
	01 No. Surge Vessel for Katabalanga
	i. 01 No. Standby Power Generators 40KVA
10	MASAKA AREA
	ii. 01 No. High Lift Pump for Kyabakuza
	iii. 01 No. High lift pump for Bwala
11	KALUNGU BRANCH
	i. 01 No. Booster Pump
	ii. 02 No. Standby power Generator for Lugazi borehole & booster
	iii. 150 cubic meters reservior tank
12	LUWEERO AREA

Continuous Improvement for Sustainable and Equitable Service Delivery

#	Planned Interventions by Area
	i. 02 No. Borehole pump sets
	ii. Construction of sump house at Nsozi bili
	iii. 02 No. High lift Pumps
	iv. 02 No. Bore hole Drilling
	v. Planned Interventions by Area
13	BOMBO AREA
	i. 02 No. Borehole pump sets
	ii. 01 No. High lift pump sets
	iii. 01 No. Chemical Dozer
14	WOBULENZI AREA
	i. 02 No. Borehole pump sets
	ii. 01 No. Generator for Boreholes

#	Planned Interventions by Area
15	ZIROBWE BRANCH
	i. Chemical dosing system
16	SEMUTO BRANCH
	i. 02 No. Borehole pump sets
	ii. Deepening of 01 No. Bore hole
17	MITYANA AREA
	i. 03 No .Chemical Dosing Pumps
	02 No. Bore hole siting and Drilling
	i. 50M3 steel tank for Busubizi Community
18	KYOTERA AREA
	i. 02 No. Borehole Pumps
	ii. 01 No .Chemical Dosing Pumps

#	Planned Interventions by Area
19	KALISIZO BRANCH
	i. 01 No. Chemical Dosing Pumps
	ii. 01 No. Booster pump
	iii. 02 No. Borehole Pumps
	iv. Construction of sump at Matala booster
20	SANJE BRANCH
	i. 01 No. Standby Power Generator (40kVA)
	ii. 01 No. Borehole Pump sets
	iii. 01 No .Chemical Dosing Pumps
21	MUTUKULA BRANCH
	i. 01 No. Standby Power Generator (40kVA)
	ii. 01 No. Borehole Pump sets
	iii. 01 No. 50KVA transformer for Mutukula

#	Planned Interventions by Area
	iv. 01 No. Chemical Dosing Pumps
22	KAKUUTO BRANCH
	i. 01 No .Chemical Dosing Pump
23	ENTEBBE AREA
	i. 01 No. High lift pump set
	ii. 02 No. booster pump sets
	iii. 02 No. Borehole in Sseguku/Lweza
	iv. 01 No. Generator Set for Namulanda
	v. 01 No. Standby booster pump for Namulanda
	vi. Generator for Namulanda Booster Station

Continuous Improvement for Sustainable and Equitable Service Delivery





Continuous Improvement for Sustainable and Equitable Service Delivery

4.4.3 Northern and Eastern region: WSSP Planned Interventions for FY 2015/16

#	Planned Interventions by Area
1	TORORO AREA
	i. 01 No. Salt Electrolyzer
2	APAC-ADUKU-IBUJE
	i. Connecting Constructed 3 Boreholes to Network
	ii. 03 No. Borehole pump sets
3	ARUA AREA
	i. 01 No. Chemical dosing Pump
	ii. 02 Alum dozer
	iii. 01 No. High Lift Pump, 150m ³ /hr, 120m head
	iv. 01 No. Salt Electrolyzer
4	GULU AREA
	i. 01 No. Chemical Dosing Pump sets
	ii. 01 No. Standby Raw Water Pump Set

#	Planned Interventions by Area
	iii. Salt Electrolyzer
5	LIRA AREA
	i. 2 No alarm dozer pumps
	ii. 01 No. booster pump sets
	iii. 01 No. Raw Water Pump
	iv. 01 No. High Lift Pump
	v. 01 No. Salt Electrolyzer
6	NEBBI AREA
	i. Construction of Gabions at Intake
	ii. Stand By Generator (For booster station)
	iii. 01 No. Chemical dozing pumps
	iv. 01 No. High lift pump motors
7	PAIDHA AREA
	i. 01 No. Standby generator for borehole at Jukumojo Paidha
	ii. 02 No. Borehole pump set

Continuous Improvement for Sustainable and Equitable Service Delivery

#	Planned Interventions by Area
8	MBALE AREA
	i. 01 No. Standby HL Pump for Nabumali
	ii. 02 No. booster pump sets
	iii. 01 No. Air Scour Blower
	iv. 02 No. Chemical Dozer
	v. 02 No. Salt Electrolyzer
	vi. 20 No. Public Stand Pipes
9	BUDADIRI AREA
	i. Standby generator at the water treatment plant- 40KVA
10	SIRONKO AREA
	i. 02 No. Refurbishing of filters
11	PADER AREA

# Planned Interventions by Area	
	i. Construction of Aerators
	ii. 02 No. Borehole pumps
12	KITGUM AREA
	i. Drilling No. 1 new boreholes
	ii. 02 No. Borehole Pumps
	iii. 02 No. Booster Pumps
	iv. 01 No. Standby Power Generators
	v. 02 No. Chemical Dosing Pumps
13	SOROTI AREA
	i. 01 No. Salt Electrolyzer
14	MOROTO AREA
	i. 03 No. Installation of chlorine dosing facilities in Moroto, Kangole & Matany

Continuous Improvement for Sustainable and Equitable Service Delivery

# Planned Interventions by Area	
	ii. Sitting and Drilling 1No additional borehole in Moroto
	iii. Connect 2No borehole pumps to national power grid for Kangole
	iv. Installation of 7 No missing solar panels for Matany
	v. Connect 1No borehole pumps to national power grid for Matany

4.4.4 Southern and Western region: WSSP Planned Interventions for FY 2015/16

# Planned Interventions - FY 2015/16	
1	Masindi
	i. 01 No.200kVA Standby generator for the treatment plant
	ii. 01 No.Salt Electrolyzer
	iii. 01 No. Electromagnetic Bulk Meter
	iv. Chemical Dozers 1N0.
	v. Construction of Flood control barrier walls
2	Kisoro
	i. 01 No. Electromagnetic Bulk Meter
	ii. 02 No. Surge Vessels for Chuho and Kisoro Hill
	iii. Pump for Chuho water works
	iv. Construction of Mutolere Hill Reservoir
	v. Pump for Mutolere Booster
3	Fort Portal

Continuous Improvement for Sustainable and Equitable Service Delivery

# Planned Interventions - FY 2015/16	
	i. 02 No. Booster Pump sets
	ii. 01 No. Salt Electrolyzer
	iii. 01 No. Standby Power generator sets 30kVA
	iv. 01 No. Electromagnetic Bulk Meter
4	Hoima
	i. 02 No. Borehole Pump Sets
	ii. 01 No. Electromagnetic Bulk Meter
	iii. 01 No. Salt Electrolyzer
	iv. Siting and drilling 1no. Boreholes
5	Kabale
	i. 01 No. Electromagnetic Bulk Meter
	ii. 01 No. Salt Electrolyzer
	iii. 01 No. Fuel tank for the generator

#	Planned Interventions - FY 2015/16
	iv. 01 No. construction of plant operators'house
	v. 01 No. Gravity dozers
	vi. 02 No. computres (lab and production)
	vii. 01 No. Book shelve
	viii. 01 No. Set of office table and chair
	ix. 01 No.Booster station for Kihumuro-Kikungiri
6	Kasese
	i. A40 Kva Generator
	ii. Raising of Raw Water Intake Weir
	iii. Temporarily raising of the Dam weir
7	Bushenyi
	i. 01 No. Raw Water Pump


#	Planned Interventions - FY 2015/16
	ii. 01 No. Salt Electrolyzer
	iii. 01 No. Electromagnetic Bulk Meter
8	Kabwohe
	i. Transmission line 6" PVC PN10 for 3km
9	Kitagata
	i. 01 No. Chemical Dozing
10	Lyantonde
	i. 01 No. Electromagnetic Bulk Meter
	ii. 01 No. Salt electrolyzer
	iii. 01 No . Raw Water Pump
	iv. 01 No .Chemical Dosing Pump
11	Kanungu
	i. 02 No. Raw Water Pump at Kihiihi and Katete

#	Planned Interventions - FY 2015/16
	ii. 01 No 162m3 tank at Katete
12	Kamwenge
	01 Chemical doser
13	Rukungiri
	i. Pump house construction at Marumba
	ii. Pump house construction at Rwakabengo B
	iii. Pump house construction at Aunt Elvi Nikola
	iv. Submersible pump-Marumba
	v. Submersible pump-Rwakabengo B
	vi. Submersible pump-Aunt Elvi Nikola
14	Mbarara
	i. 01No. 500m3/hr Raw water Pump sets for Ruharo water works
	ii. 02 No. High Lift Pumps for Kabale Road Water Works

#	Planned Interventions - FY 2015/16
	iii. 02 No. Electromagnetic bulk meters
	iv. 02 No. Booster pumps
	v. 02 No. Salt Electrolyzer
	vi. 01 No. High lift Pump Ruharo
	vii. 01 No. Static Plant Regional Workshop
	viii. Borehole drilling and hydraulic testing for Bank filtration
	ix. 02 No. Chemical dosing pumps







*The future belongs to us, because we have taken charge of it.
We have the commitment, we have the resourcefulness,
and we have the strength of our people to share the dream across
Africa of clean water for all.*

A background image showing a water splash with droplets and ripples, overlaid with a light blue gradient.

SUMMARY OF PLANNED WATER MAINS EXTENSIONS, SEWER MAINS EXTEN- SIONS AND PUBLIC STAND POSTS FOR FY 2015/2016 PER AREA/BRANCH AND REGION

CHAPTER FIVE

SUMMARY OF PLANNED WATER MAINS EXTENSIONS, SEWER MAINS EXTENSIONS AND PUBLIC STAND POSTS FOR FY 2015/2016

5.1 Planned Water Mains Extensions for Kampala Metropolitan Area for FY 2015/16

#	Branch	Planned Length(meters)
1	Branch 1: CITY CENTRE	2,000
2	Branch 7 - NAKULABYE	1,300
3	Branch 2 - KANSANGA	2,000
4	Branch A - BUNGA	1,900
5	Branch L- NDEJJE	9,000
6	Branch B - SALAMA	2,900
7	Branch 3 - NAJJANANKUMBI	4,700
8	Branch F - KANYANYA	3,500
9	Branch G - MATUGGA	19,300
10	Branch 4 - BWAISE	5,100
11	Branch 5 - NTINDA	2,000
12	Branch E - GAYAZA	6,100

Continuous Improvement for Sustainable and Equitable Service Delivery

#	Branch	Planned Length(meters)
13	Branch 8 - NATEETE	5,500
14	Branch J - KYENGERA	8,000
15	Branch 9 - NANSANA	7,000
16	Branch B - SEETA	16,500
17	Branch B - MUKONO	19,100
18	Branch C - KIREKA	11,000
19	Branch - WAKISO	18,900
20	.Branch D - KYALIWAJJALA	3,100
21	Branch-Bulenga	2,500
22	Branch - NAKAWA	2,300
23	KAKIRI	5,000
	TOTAL	158,700

5.2 Planned Water Mains Extensions for Central Region for FY 2015/16

#	Area	Planned Length(meters)
1	JINJA	23,900
2	BUWENGE	11,000
3	LUGAZI	5,000
4	MUBENDE	12,000
5	KIGUMBA	12,000

#	Area	Planned Length(meters)
6	BWEYALE/KIRYANDONGO	10,000
7	MASAKA	20,000
8	KALUNGU	13,500
9	LUWEERO	12,800
10	BOMBO	13,000
11	WOBULENZI	8,000
12	ZIROBWE	4,000
13	SEMUTO	10,000
14	MITYANA	9,500
15	KYOTERA	10,000
16	KALISIZO	8,000
17	SANJE	5,000
18	MUTUKULA	5,000
19	KAKUTO	6,000
20	KAMULI AREA	8,000
21	MBULAMUTI BRANCH	9,000
22	ENTEBBE	27,000
23	IGANGA	16,500
24	BUGIRI BRANCH	5,500
25	KALIRO BRANCH	8,000

Continuous Improvement for Sustainable and Equitable Service Delivery

#	Area	Planned Length(meters)
26	MAYUGE BRANCH	5,500
27	BUWAMA	9,000
28	KAYABWE	9,200
29	KIGANDA	5,000
30	NAKASEKE	5,000
	TOTAL	306,400

5.3 Planned Water Mains Extensions for Northern and Eastern Region for FY 2015/16

#	Area	Planned Length(meters)
1	APAC-ADUKU-IBUJE	8,000
2	ARUA	16,000
3	GULU	10,000
4	KITGUM	9,000
5	LIRA	15,200
6	MBALE	10,000
7	SIRONKO	4,000
8	BUDADIRI	17,500
9	NEBBI	7,000
10	PAIDHA	6,000

#	Area	Planned Length(meters)
11	PADER	5,000
12	SOROTI	5,000
13	MOROTO	10,000
14	TORORO	30,000
15	ADJUMAN	10,000
16	WANDI	14,000
	TOTAL	176,700

5.4 Planned Water Mains Extensions for Western and South Western Region for FY 2015/16

#	Area	Planned Length(meters)
1	MBARARA	29,200
2	RUBINDI	7,000
3	KINONI	6,000
4	FORTPORTAL	9,500
5	KASESE	5,500
6	KABALE	14,500
7	BUSHENYI	11,200
8	KABWOHE	7,000
9	KITAGATA	7,000

Continuous Improvement for Sustainable and Equitable Service Delivery

#	Area	Planned Length(meters)
10	MASINDI	8,000
11	HOIMA	9,600
12	KISORO	7,000
13	RUKUNGIRI	5,500
14	KANUNGU	8,000
15	KAMWENGE	6,000
16	IBANDA	6,000
17	LYANTONDE	8,000
18	NTUNGAMO	8,000
19	RUSHERE	8,000
20	MPONDWE	25,000
TOTAL		196,000

5.5 Planned Water Mains Extensions for OTHER Towns to be taken over during the FY 2015/16

#	Area	Planned Length(meters)
1	Other Towns**	100,000
TOTAL		100,000

***New Towns envisaged to be taken over by NWSC during the FY 2015/2016*

5.6 Planned Sewer Mains Extensions for FY 2015/16

#	Area	Planned Length(meters)
1	KAMPALA METROPOLITAN AREA	11,700
2	JINJA	1,700
3	MASAKA	2,500
4	ENTEBBE	1,000
5	IGANGA	1,000
6	GULU	1,000
7	MBALE	1,300
8	SOROTI	1,000
9	TORORO	1,100
10	MBARARA	1,000
11	FORTPORTAL	400
12	MASINDI	1,000
13	HOIMA	1,200
14	KISORO	800
TOTAL		15,000

Continuous Improvement for Sustainable and Equitable Service Delivery

5.7 Planned Public Stand Posts for Kampala Metropolitan Area FY 2015/16

#	Area	Planned PSPs
1.	BUNGA	50
2.	NATEETE	50
3.	KAWEMPE	70
4.	NAKULABYE	30
	TOTAL	200

5.8 Planned Public Stand Posts in Central Region for FY 2015/16

#	Area	Planned PSPs
1.	JINJA	15
2.	BUWENGE	5
3.	LUGAZI	7
4.	MUBENDE	10
5.	MASAKA	12
6.	KALUNGU	5
7.	MITYANA	10
8.	ENTEBBE	15

Continuous Improvement for Sustainable and Equitable Service Delivery

#	Area	Planned PSPs
9.	IGANGA	10
10.	MAYUGE	5
11.	KALIRO	5
12.	BUGIRI/NALUWERERE/BUWUNI	10
13.	KAMULI	10
14.	MBULAMBUTI	5
15.	LUWERO/WOBULENZI/BOMBO	20
16.	KALISIZO	5
17.	KYOTERA	6
18.	SANJE	3
19.	KAKUUTO	3
20.	MUTUKULA	3
21.	LYANTONDE	10
22.	KIGUMBA	8
23.	BWEYALE/KIRYANDONGO	8
	TOTAL	190

5.9 Planned Public Stand Posts in Northern and Eastern Region for FY 2015/16

#	Area	Planned PSPs
1	TORORO	10
2	SOROTI	4
3	MOROTO	5
4	APAC/ADUKU	15
5	ARUA	11
6	LIRA	5
7	PADER	10
8	NEBBI/PAIDHA	20
9	KITGUM	5
10	MBALE	50
11	GULU	10
	TOTAL	145

5.10 Planned Public Stand Posts in Western and South Western Region for FY 2015/16

Area		Planned PSPs
1.	KISORO	5
2.	MASINDI	-
3.	HOIMA	15
4.	KABALE	48
5.	KITAGATA	10
6.	KABWOHE	10
7.	BUSHENYI	10
8.	KAMWENGE	-
9.	RUKUNGIRI	10
10.	IBANDA	-
11.	BWEYALE	28
12.	KIGUMBA	20
13.	FORT PORTAL	20
14.	KASESE	38
15.	MBARARA	0

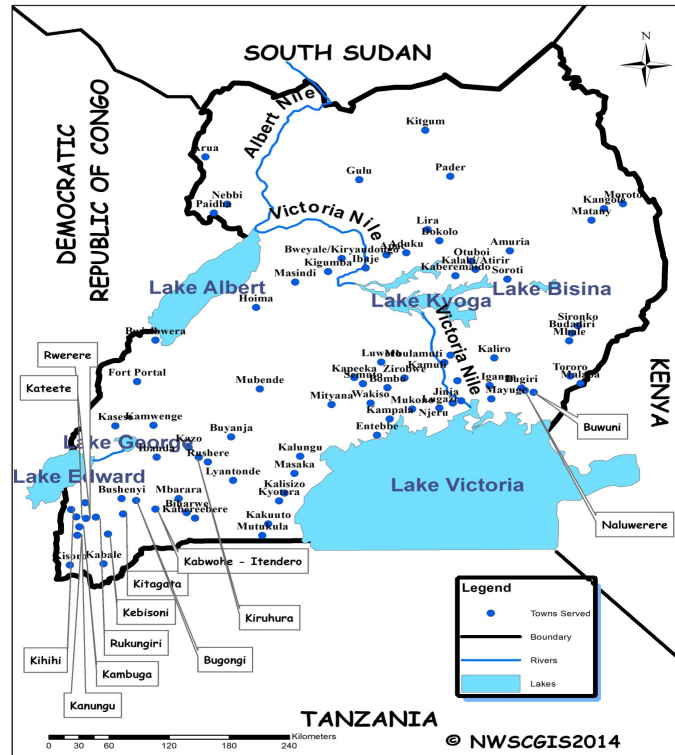
Continuous Improvement for Sustainable and Equitable Service Delivery

Area	Planned PSPs
16. KANUNGU	10
17. RUSHERE	-
TOTAL	224

5. 11 Planned Public Stand Posts for OTHER Towns to be taken over during the FY 2015/16

#	Area	Planned PSPs
1	Other Towns**	150
	TOTAL	150

***New Towns envisaged to be taken over by NWSC during the FY 2015/2016*



Continuous Improvement for Sustainable and Equitable Service Delivery

ANNEXES

1	Kampala	24	Hoima	47	Nyamirama	70	Sironko	93	Kalaki
2	Mukono	25	Mbarara	48	Mayuge	71	Budadiri	94	Atariri
3	Wakiso	26	Kabale	49	Ibanda	72	Rubindi	95	Kapeeka
4	Jinja	27	Bushenyi	50	Lyantonde	73	Bwizibera	96	Kagoma
5	Njeru	28	Ishaka	51	Kamwenge	74	Bugiri	97	Ssemuto
6	Entebbe	29	Bombo	52	Kitagata	75	Naluwerere	98	Bugonji
7	Kajjansi	30	Nebbi	53	Kigumba	76	Buwuni	99	Ryeru
8	Lugazi	31	Kabwohe	54	Kiryandongo	77	Buwenge	100	Magambo
9	Mbale	32	Itendero	55	Bweyale	78	Kamuli	101	Kichwamba
10	Iganga	33	Kangyenye	56	Kaliro	79	Mbulamuti	102	Rubirizi
11	Soroti	34	Kisoro	57	Otuboi	80	Ziobwe	103	Mpondwe
12	Tororo	35	Rukungiri	58	Kitgum	81	Kalungu	104	Adjuman
13	Malaba	36	Kebisoni	59	Pader	82	Kyotera	105	Kiganda

14	Masaka	37	Buyanja	60	Apac	83	Sanje	106	Lukaya
15	Kaberaido	38	Rwerere	61	Aduku	84	Kakuuto	107	Buwama/Kayabwe
16	Amuria	39	Nyakagyeme	62	Kalisizo	85	Mutukula	108	Wandi
17	Gulu	40	Kanungu	63	Paidha	86	Ntungamo	109	Kakiri
18	Lira	41	Kihihi	64	Mityana	87	Ibuje	110	Nakaseke
19	Arua	42	Kambuga	65	Luwero	88	Moroto	111	Lukaya
20	Mubende	43	Butogota	66	Wobulenzi	89	Kangole		
21	Fort Portal	44	Kanyampanga	67	Rushere	90	Matany		
22	Kasese	45	Kanyantoro	68	Kiruhura	91	Biharwe		
23	Masindi	46	Kateete	69	Kazo	92	Kaberebere		



NATIONAL WATER AND SEWERAGE CORPORATION
PLOT 39 JINJA ROAD P.O Box 7053, KAMPALA-UGANDA
TEL:(+) 256 313 315 000
Email: info@nwsc.co.ug, website: www.nwsc.co.ug
TOLL FREE LINE: 0800200977 / 0800300977