

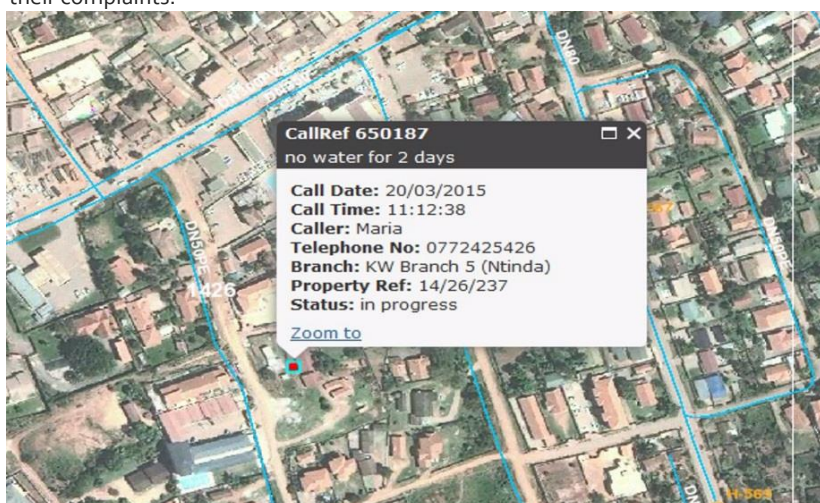


NWSC Expands Scope of GIS Mapping Technology

27th March 2015

Weekend Edition

With changing trends especially technologically, NWSC is not being left behind. The GIS team led by Dr. Frank Kizito and Gilbert Akol have in the recent days overseen the development of a digital platform that overlays information such as leakages, pending cases and more onto a map of the area, showing the exact location and other details. With time, the maps will incorporate Water Sampling points and will be linked to the website to enable customers follow up progress on their complaints.



Deo Serumaga and Susan Namaalwa hosted on Bukedde 100.5fm

Spoke to customers about our product, ensured the public about the quality of our water and also issues pertaining to meter theft, fraudsters and water theft, the major challenges facing the corporation and thus called on public to look out for those involved in these acts and also to desist from them.



SCMCM pays Seeta Branch a visit.



The Senior Manager Commercial and Customer Care, Mr. Richard Muhangi yesterday paid a visit to the Seeta branch office. The major purpose of the visit was to check performance figures and to appreciate their efforts as a branch. With collections of so far of 420m, he acknowledged the vibrancy of the branch in terms of new connections, high discipline and no fraud reported thus far. He gave tips and advice. He is to meet the team again today, 27th March 2015.

Water Quality Testing; Bweyogerere, Kinawataka, Mukono



NWSC water quality team sampling water at Bweyogerere (L), Mukono (C) and Seeta (R)

Area Watch/ISDP updates



Gulu



Static plant team together with technical team replacing a DN250 Valve which had made back washing of sand filters impossible.

Fort Portal

Fort Portal Lab technician takes samples from a borehole. The area is carrying out Water Sample tests from different public facilities to ensure safety of water sources in the area.



Social Media Praise, Rants, Comments and More



OptaJude @Jude_Mugabi · 1h1 hour ago

Not every water problem should be blamed on @nwscug .Sometimes it's a plumbing issue. Call a plumber



Wan Bert Roberts @LwangaMaths · 11h11 hours ago

@martinssempa if you want a vote of no confidence in @nwscug ,,U made your point,, so chill and let them improve #2much @benmugu @NWSCMD

Kampala



Top Management is in the process of preparing the corporate plan for the period 2015-2018. The discussions are taking place at Serene Suites Nateete and are currently on their second day.

Entebbe



A fire broke out at Seguku and devoured everything in sight except the NWSC Kiosk. The Kiosk was even functional and supplied water to stop the fire from spreading. The benefits of having NWSC in your vicinity.

Seeta

Seeta branch in a move to cater better for customers, has reached an agreement with DT Bank to share office space. The new arrangement will enable Seeta residents check account statements and pay bills, all in the same premises. The development is the result of discussions between DTB CEO, their Lawyer and Mr. Muhangi, KW legal representative and the landlord. DTB has also expressed interest in subletting Mukono branch as well.



DTB CEO (L) Richard Muhangi (2nd L), the Landlord (2nd Right) at the Seeta offices

RESAIL

As water theft continues to be a major concern, NWSC continues to push for the complete halt of this vice through its various programs like RESAIL in Entebbe, SNARP in Jinja and WALOPU in Kampala.



STOP WATER THEFT

Help stop water theft.
Call 0800100977, 0800 200 977, 0800300977
to anonymously report illegal connections.

www.nwsc.co.ug waterug waterug @nwscug waterug

Fun and Leisure Jokes

BUSINESS DINNER.

The business I work for had a dinner together with all family members. Before the first speech, the emcee gave the following announcement, "we kindly ask if you can please put all cell phones and children on vibrate."

WHO'S THE BOSS?

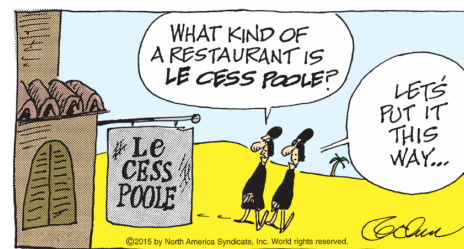
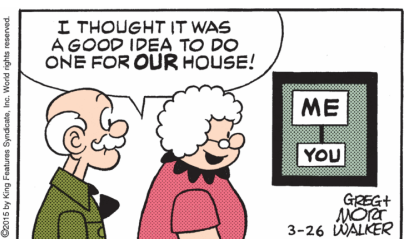
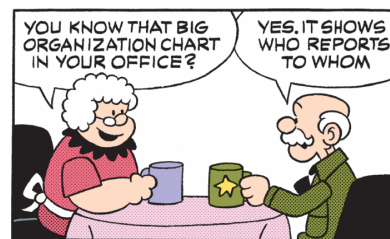
The Boss of our small company was complaining during a staff meeting that people didn't respect him enough. Trying to change the attitude in the office he came in the next day with a sign for his door it said, "I am the boss". One of the employees apparently not appreciating the change posted a post-a-note on the sign it said "your wife wants her sign back"

Q: What is light as a feather, but even the strongest man cannot hold it more than a few minutes?

A: His breath

Q: Imagine you are in a sinking rowboat surrounded by sharks. How would you survive?

A: Stop imagining



3-25
© 2015 by Keanie, Inc.
Dist. by King Features Syndicate, Inc.
www.familycircus.com

"Who decided 'Wednesday' needs an extra 'D' in it?"

Editorial team:

- Brian Abong
- Sheila Nabafu
- Fisher Sekabira
- Jill Mugasa
- Hans Ruyonga